

# Calendar GIRLS

By Tim Firth

Directed by Mary M. Finnerty



**JUN 17–JUL 24**  
on the Proscenium Stage



**PARK SQUARE**  
THEATRE

2015-2016 SEASON

sponsored by



**Wealth  
Management**

theatre for you. (yes you.)™

**ON SALE NOW!**



*Now at the  
New Century  
Theatre!*

# TRIPLE ESPRESSO®

a highly caffeinated comedy

**NOVEMBER 23 – JANUARY 8**

BOB STROMBERG IS  
**THAT  
WONDER BOY**



**MARCH 14 – 26, 2017**

GERALD CHARLES DICKENS  
AS CHARLES DICKENS IN

## To Begin With

WRITTEN AND DIRECTED  
BY JEFFREY HATCHER

*Inspired by "The Life of Our Lord" by Charles Dickens*



**MARCH 28 – APRIL 16, 2017**

**New Century Theatre | City Center | Street Level**

**New Century Box Office (no service fees) | 612.455.9501**

**Groups 10+ Save! | [HennepinTheatreTrust.org](http://HennepinTheatreTrust.org)**

PRESENTED BY  
**HENNEPIN THEATRE TRUST**  
ENDORSED • STATE • FANTASIES • NEW CENTURY

PRODUCED BY  
**THE DANIEL  
GROUP**

**Dear Park Square Patron,**

**Welcome to a celebration of the amazing women of the Twin Cities stage!** We relish a script with SO MANY strong roles for women and the chance to bask in the warmth of their combined talents. With Mary Finnerty at the helm (who has strong ties to the United Kingdom and a deep understanding of how to shape relationships on stage), you are in for a great journey.

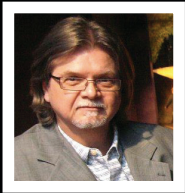
**This story is not about “baring it all.”** It’s about the joy that an unselfish act of friendship can bring. These women reveal, not their bodies, but their hearts.

**When we chose this play, it had not yet had an American production,** but it had swept through England in a tidal wave of applause for productions both low and lavish. We hope this production can serve as a gentle antidote to our too-often toxic civic atmosphere – as a humanizing and healthy dose of fresh air and empathy.

Rather than ask you to click and donate on a GoFundMe.com page, **this plays lets you ask for what you truly need – and allows you to give more than you thought you could. To your neighbors. To your community. To yourself.**

If this show tickles your funny bone, brings back the memory of a person who changed your life or a moment when you accomplished more than you’d imagined, please encourage a friend to experience it. May this production make a village of us all, if only for a few hours on a summer day.

All our best,



A handwritten signature in cursive script that reads "Richard".

Richard Cook, Artistic Director  
651.767.8482 | [cook@parksquaretheatre.org](mailto:cook@parksquaretheatre.org)



A handwritten signature in cursive script that reads "Michael-jon".

C. Michael-jon Pease, Executive Director, CFRE  
651.767.8497 | [pease@parksquaretheatre.org](mailto:pease@parksquaretheatre.org)



**OUR MISSION** is to enrich our community by producing and presenting exceptional live theatre that touches the heart, engages the mind and delights the spirit.

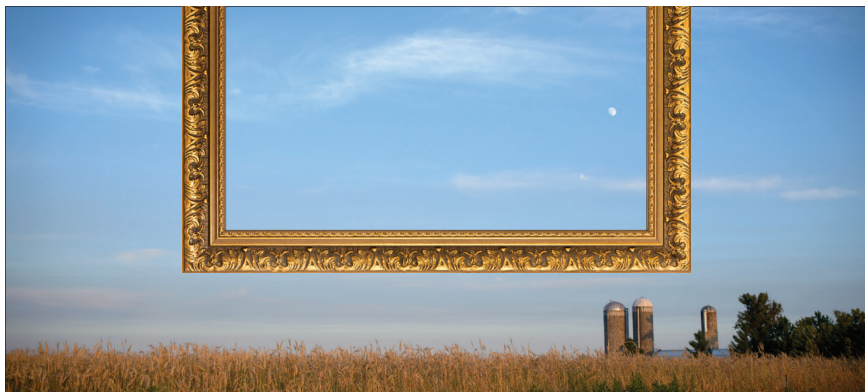
## THE STORY

When Annie's husband dies of leukemia, she and her friends set out to raise funds for a local charity – by posing for a calendar completely in the buff. Positioned behind strategically placed flower arrangements, cakes, and knitting projects, the women discover the beauty within themselves and one another. When news of the women's hilarious venture spreads like wildfire, the women find themselves exposed in ways they hadn't anticipated, and they reach for a new level of understanding and friendship that will carry them through all the days to come. **"...in the great good cause of cheering us up in hard times, *Calendar Girls* is just the ticket."** – *Telegraph*

## THE PLAYWRIGHT



**TIM FIRTH'S** theatre credits include *Neville's Island* (Nominated for Best Comedy, Evening Standard and Olivier Awards 1994, winner Best Play MEN Awards 2006), *The Safari Party*, the musical *Our House* (Olivier Award for Best New Musical 2002), *The Flint Street Nativity* (record-breaking productions two years running at the Liverpool Playhouse and then at Edinburgh Festival Theatre under the title *The Corstorphine Road Nativity*) and *Sign of the Times*, which toured the UK in 2009. Tim's stage adaptation of *Calendar Girls* (adapted by Firth from his own film), produced by David Pugh & Dafydd Rogers Ltd, has broken all British box office records for a play and has toured the world. It was nominated for an Olivier Award and won the 2010 Whatsonstage Best Comedy Award. Firth's film credits include *Blackball*, *Calendar Girls* (British Comedy Awards, Best Comedy Film 2003), *Kinky Boots* (Sundance Selection, Best International Feature, Florida Film Festival) and *The Wedding Video*. *excerpted from londonSCREENwritersfestival.com and timfirth.com*



MASTER  
PEACE

99.5  
classicalMPR

Picture yourself amid clarity and  
calm at [classicalmpr.org](http://classicalmpr.org)



# Calendar GIRLS

By Tim Firth

Director .....	Mary M. Finnerty
Dialect Coach .....	Keely Wolter
Scenic Designer .....	Michael Hoover
Musical Consultant/Arranger .....	Peter Vitale
Costume Designer .....	MaryBeth Gagner
Lighting Designer .....	Michael P. Kittel
Sound Designer .....	Katharine Horowitz
Properties Designer .....	Abbee Warmboe
Stage Manager .....	Laura Topham*
Assistant Stage Manager .....	D. Marie Long*

## CAST

Cora .....	Laurel Armstrong
Chris .....	Charity Jones*
Annie .....	Christina Baldwin*
Jessie .....	Linda Kelsey*
Celia .....	Carolyn Pool*
Ruth .....	Shanan Custer
Marie .....	Julia Cook*
John .....	John Middleton*
Rod .....	Bill McCallum*
Lady Cravenshire/Brenda Hulse .....	Karen Weber
Lawrence .....	Ryan Colbert
Elaine .....	Anna Hickey
Liam .....	Kory LaQuess Pullam

**PLACE AND TIME:** A village in Yorkshire, England, 2005.

**PERFORMANCE TIME:** The performance will run approximately  
2 hours, 20 minutes, including one intermission.

.....  
"Calendar Girls" is presented by special arrangement with SAMUEL FRENCH, INC.

**The video and/or audio recording of this performance by any means whatsoever are strictly prohibited.**

THE VIDEOTAPING OR MAKING OF ELECTRONIC OR OTHER AUDIO AND/OR VISUAL RECORDINGS OF THIS PRODUCTION IS A VIOLATION OF UNITED STATES COPYRIGHT LAW AND AN ACTIONABLE FEDERAL OFFENSE.

**As a courtesy to our actors and those around you,  
please DEACTIVATE all PHONES and ELECTRONIC DEVICES.**

\*Member of Actors' Equity Association, the Union of Professional Actors and Stage Managers in the United States.

Park Square Theatre is a member of Theatre Communications Group (TCG), the national organization for the American theatre.

# BARING IT ALL:

## *What Stage Nudity Actually Reveals*

Once a decade, it seems, a debate erupts among theatre practitioners, critics, and audiences about the merits and hazards of stage nudity. Creative teams weigh the metaphorical values of baring it all against the concern that actors' bare bodies may distract from a play's themes. Tim Firth was aware of such potential sensationalism when he wrote *Calendar Girls*, based on a true story. In 1999, when her husband John died of non-Hodgkin's lymphoma, Angela Baker enlisted her friends to raise money for a sofa for the visitor's lounge in the hospital where John was treated. They created a calendar they thought might sell better than the usual landscape scenes. And sell it did: a half-million copies within three years. Four more calendars and a cookbook have followed, and the modest amount they'd hoped to raise for furniture has become, to date, more than five million dollars for UK's Leukemia and Lymphoma Research foundation.

*Calendar Girls* is a fictionalized account of the venture, but the play's use of nudity reveals more about the characters than merely documenting the deeds of their real-life counterparts. People have appeared nude on stage since time immemorial, for very different reasons. In the 1960s, stage nudity gained political potency, as agitators like The Living Theater bared it all to protest status quo values. Peter Shaffer's 1973 *Equus* (which Mary Finnerty directed for Park Square in 1995), used nudity to represent freedom from religious oppression. In the 1980s and 1990s, plays about AIDS, including *Angels in America*, turned naked bodies into political bodies. In 1999, *Wit* (which Linda Kelsey has directed) used nudity to represent freedom from the same disease that took John Baker.

*Calendar Girls* is part of this modern theatrical phenomenon, in which characters lose their clothing but gain much more. Annie responds to her husband's death with a benevolent act that strips her and her friends bare, literally and figuratively. "The story wouldn't be as powerful if we did not see them pose nude," director Mary M. Finnerty says. "They do it to memorialize one friend and give hope to another. Each must become vulnerable and expose her flaws and recognize her strength. When the women see themselves pictured nude, they accept themselves in a new way and become a stronger community. Watching them confront their fear helps us to love them more."

—Matt DiCintio



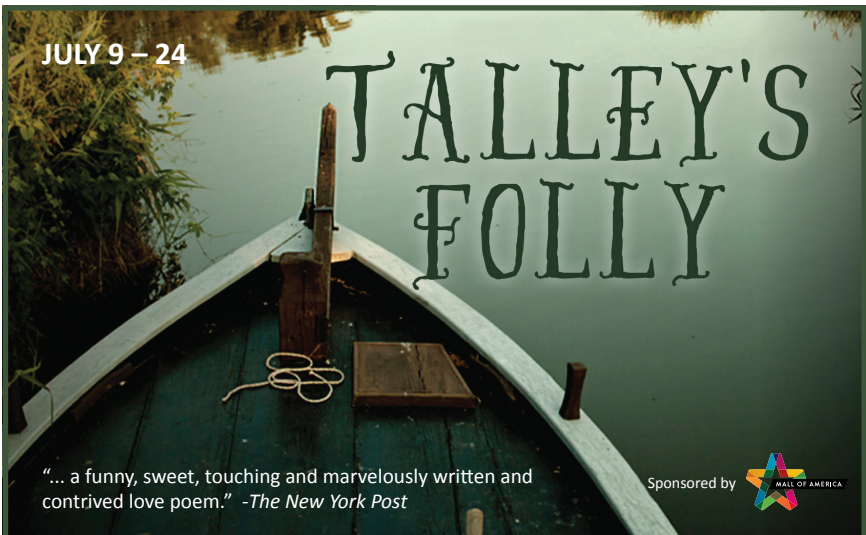
Matt DiCintio has been a producing director for Emigrant Theater and a dramaturg for Park Square and the Guthrie, among others. His writing has been published in the *Routledge Companion to Dramaturgy*, *Columbia Encyclopedia of Modern Drama*, *American Theatre* and *City Pages*. Matt holds a PhD in Drama from Tufts University.

# WHY CALENDAR GIRLS?

## *Words from the Director*

As a theatre, we were looking for a way to feature some of the amazing female talent in the Twin Cities — especially women over 40. We also wanted to connect our audiences with this story because we knew they would love it. The reason I chose to direct it when Richard offered it to me is that it made me laugh and cry — sometimes at the same time. It is funny and sad and hopeful and I knew our audiences would appreciate it. I lost my sister to cancer in 2012 after her nine-year battle to beat the disease. And she did beat it — even though she passed away. She kept her faith in life and love and her sense of humor right up to her last days. This play is about a lovely man who leaves his bereaved wife with a message: that he believes in her and life and love and beauty even as he faces his death...perhaps especially as he faces it. When John asks Annie to plant the sunflower seeds in the spring and then go photograph them at the end of the summer, he is trying to show her how to have hope after he leaves her. It is a *Leaves of Grass*, Walt Whitman “look for me under your boot soles” message. He asks her to “turn her face to the sun” like a sunflower and remember her beauty and ability to love. He is showing her how to have a relationship with him after he dies.

—Mary M. Finnerty



By Lanford Wilson  
 Directed by Angela Timberman  
 Scenic Design by Joel Sass  
**Tickets: 952-563-8575 | [artistrymn.org](http://artistrymn.org)**

 **ARTISTRY**  
 at Bloomington Center for the Arts



## LAUREL ARMSTRONG

Cora

**Park Square** Debut

**Representative Theatre**

Flying Foot Forum: *Alice in Wonderland, Heaven;*

Girl Friday Productions: *Camino Real, Street Scene*; Workhaus Collective: *A Short Play About 9/11*; Nautilus Music Theater: *Reach, Rough Cuts*; Sesame Street Live: *1-2-3 Imagine!*; Bloomington Civic Theatre: *City of Angels, Into the Woods, Les Miserables*; Theater Latté Da: *NEXT: New Musicals in the Making* **Training** Studied Musical Theater at Brigham Young University



## CHRISTINA BALDWIN\*

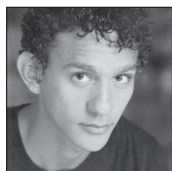
Annie

**Park Square** *Ragtime, Grey Gardens, Well* **Representative**

**Theatre** Nautilus Music-

Theatre: *The Fantasticks*; Ten

Thousand Things: *Dear World*; The Moving Company: *Liberty Falls 54321*; Jungle Theater: *In the Next Room*; Guthrie Theater: *Roman Holiday*; Theatre de la Jeune Lune: *Carmen*; American Repertory Theater: *Don Juan Giovanni, Figaro*; Berkeley Repertory Theatre: *Figaro* **TV/Film** *I Am Not a Serial Killer, A Stray, Stay Then Go*; *MNOriginals* (PBS); *Great Performances HMS Pinafore* (PBS); *Jona/Tomberry*; *Beheaded*; *Flourtown* **Training** M.M., Vocal Performance, University of Minnesota; B.M., Vocal Performance, Lawrence University **Awards** *City Pages* Best Actress (2014), Ivey Award winner (2009), *Star Tribune* Artist of the Year Honorable Mention (2003) **Upcoming Projects** Jungle Theater: *The Oldest Boy*; Guthrie Theater: *REFUGIA* (The Moving Company)



## RYAN COLBERT

Lawrence

**Park Square** *Romeo and Juliet,*

*Great Expectations, The Color*

*Purple* **Representative Theatre**

Guthrie Theater: *Choir Boy,*

*Born Yesterday*; Pillsbury House Theatre: *Prep*; Mixed Blood Theatre: *Charm, Colossal*; Red Eye

Theater: *Will You Still Love Me Tomorrow*; Intermedia Arts(Fringe): *Habibi*; New Epic Theater: *The Picture of Dorian Gray*; Public Theater of MN: *Macbeth, As You Like It*; Minnesota Centennial Showboat: *The Vampire, Demon Barber of Fleet Street* **Training** B.F.A., University of Minnesota/ Guthrie Theater Actor Training Program **Upcoming Projects** Guthrie Theater: *A Christmas Carol*



## JULIA COOK\*

Marie

**Park Square** Debut

**Representative Theatre**

Old Log Theater *The*

*Best Little Whorehouse*

*in Texas*; Theater Latté Da: *NEXT: New Musicals in the Making*; North American Tour: *Mamma Mia!*; Asian Tour: Rodgers and Hammerstein's *Cinderella* (starring Lea Salonga); New York Fringe Festival; St. Luke's Theatre; Metropolitan Playhouse; Asolo Rep **Training** B.F.A., Acting, University of Texas, Austin; M.F.A., Acting, Asolo Conservatory/Florida State University



## SHANAN CUSTER

Ruth

**Park Square** *2 Sugars,*

*Room for Cream*; *Dead*

*Man's Cell Phone*

**Representative Theatre**

Interact Theater: *Hell is Empty and ALL the Devils are Here*; Casting Spells Productions: *Frankie and Johnny in the Clair De Lune*; Workhaus Collective: *The Mill*; Theatre Pro Rata: *Emilie: Le Marquis du Châtelet Defends Her Life Tonight* **Training** M.A., Theater History, Theory and Criticism, University of Maryland, College Park **Awards/Other** Ivey Award 2013 (Ensemble, *2 Sugars, Room for Cream*) **Upcoming Projects** 2016 MN Fringe Festival: *Sometimes There's Wine*; Park Square: *The Liar*, Theatre Pro Rata (at Park Square): *Up: The Man in the Flying Chair*

# Make wealth planning your performance of a lifetime



Planning. Preparation. Dedication. Every performance depends on at least these three critical components. The same is true when thinking about your financial future. RBC Wealth Management can provide the guidance needed to help ensure your wealth planning delivers a memorable performance.

**RBC Wealth Management is proud to support the  
Park Square Theatre.**

Edina | Minneapolis | Minnetonka | North Oaks | St. Paul | Stillwater | Wayzata  
[www.rbcwealthmanagement.com/usa](http://www.rbcwealthmanagement.com/usa)



**Wealth  
Management**





## ANNA HICKEY

Elaine

**Park Square** *The School for Lies* **Representative Theatre** Hennepin Theatre Trust: *The Realish Housewives of Edina*;

Walking Shadow Theatre Company: *The Three Musketeers*; Illusion Theater: *My Antonia*; Paul Bunyan Playhouse: *Spamalot*; Loudmouth Collective: *A Bright New Boise*; Bloomington Civic Theatre: *Singin' in the Rain* **Training** B.A., Theatre Arts, University of Minnesota; M.A., London Academy of Music and Dramatic Art **Other** Freelance Choreographer and Teaching Artist with Stages Theatre Company



## CHARITY JONES\*

Chris

**Park Square** *Sexy Laundry, The Adventures of Sherlock Holmes and the Suicide Club, The Sisters Rosensweig*

**Representative Theatre** Guthrie Theater, Shakespeare Theatre Company, American Conservatory Theater, Jungle Theater, History Theatre



## LINDA KELSEY\*

Jessie

**Park Square** *The Other Place, 4000 Miles, Mary T. and Lizzy K., Doubt, Dead Man's Cell Phone, Frozen,*

*The Belle of Amherst* **Representative Theatre** Minnesota Jewish Theatre Company: *The Tale of the Allergist's Wife*; Guthrie Theater: *The Tempest, When We Are Married*; Torch Theater: *Dangerous Liaisons*; Mixed Blood Theatre: *Agnes Under the Big Top* **TV/Film** (series regular) *Lou Grant, Sessions* (HBO), *Day by Day*; (mini-series) *Eleanor and Franklin*; (guest starring) *MASH, The Mary Tyler Moore Show, Streets of San Francisco, Barnaby Jones* **Training** B.A. and McKnight Fellowship in Acting, University of Minnesota **Awards/Other** Five Emmy Nominations: *Lou Grant*; Two Golden Globe Nominations: *Lou Grant*; Cable Ace nomination: *Sessions*



## BILL McCALLUM\*

Rod

**Park Square** Debut **Representative Theatre** (as Actor) Guthrie Theater:

Over 40 productions since 1996; History Theatre: *Civil Ceremony*; American Players Theater: 7-Season Company Member; Dark & Stormy Productions (Associate Artistic Director 2012-2014): *Speed-the-Plow, The Receptionist, The Hothouse*; (as Director) Dark & Stormy Productions: *The Drunken City*; New Group Productions: *The Comedian's Tragedy, Romeo and Juliet, Macbeth* **Upcoming Projects** Cantus: *Romeo and Juliet*

**MINNESOTA CENTENNIAL**  
**SHOW BOAT**

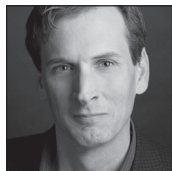
**UNDER THE GASLIGHT**  
WITH MUSICAL OLIO

**FAREWELL SEASON:**  
July 7 - August 27

director  
John Miller-Stephany

olio consultant  
Vern Sutton

**(651) 227-1100**  
**showboat.umn.edu**

**JOHN MIDDLETON\***

John

**Park Square** *Romeo and Juliet, Sexy Laundry, The School for Lies, American Family, Dead Man's Cell*

*Phone, Becky's New Car* **Representative Theatre** Jungle Theater: *Detroit*; Theater Latté Da: *C.*; Torch Theater: *Prints*; Gremlin Theatre: *Hedda Gabler*; Carlyle Brown & Company: *Are You Now or Have You Ever Been...*; Girl Friday Productions: *Street Scene*

**CAROLYN POOL\***

Celia

**Park Square** *2 Sugars, Room for Cream, August: Osage County, Dead Man's Cell Phone, The*

*Sisters Rosensweig, Proof, The Last Night of Ballyhoo, Born Yesterday* **Representative Theatre** Hippodrome Theatre: *Women in Jeopardy*; Old Log Theater: *Almost, Maine*; Illusion Theater: *Three Viewings*; Gremlin Theatre: *Orson's Shadow*; Jungle Theater: *Honour Training B.A., Augsburg College* **Awards/Other** Artist/Mentor for The Chicago Avenue Project; Ivey Award winner 2008 (Ensemble, *Orson's Shadow*) and 2013 (Ensemble, *2 Sugars, Room for Cream*); Best Actress 2011 SoCal Film Festival (*Rotations of the Earth*) **Upcoming Projects** 2016 MN Fringe Festival: *Sometimes There's Wine*

**KORY LAQUESS PULLAM**

Liam

**Park Square** *Romeo and Juliet* **Representative Theatre** Guthrie Theater:

*Choir Boy*; Children's Theatre Company: *Charlotte's Web*; Pillsbury House Theatre: *Prep*; Walking Shadow Theatre Company: *The Christians*; Brave New Workshop: *The Working Dead*; History Theatre: *Buddy: The Buddy Holly Story* **Training B.F.A.,** Acting/Directing, Stephen F. Austin State

University **Other** Founder of Blackout Improv **Upcoming Projects** Guthrie Theater: *The Parchman Hour*; Underdog Theatre: *Baltimore is Burning*

**KAREN WEBER**

Lady Cravenshire/  
Brenda Hulse

**Park Square**

*Communicating Doors, Becky's New Car*

**Representative Theatre** Ordway: *A Little Night Music*; History Theatre: *Hiding in the Open, The Grand Excursion, Fireball*; Bloomington Civic Theatre: *Follies, A Light in the Piazza, Master Class*; Theater Latté Da: *A Christmas Carol Peterson, Burning Patience*; Minneapolis Music Theatre: *Bat Boy the Musical, Chess*; Plymouth Playhouse: *I Love You, You're Perfect, Now Change*; Illusion Theater: *Autistic License*



*Season 17 Coming Soon*  
**THEATREUNBOUND.COM**

## ARTISTIC STAFF



### MARY M. FINNERTY

Director

**Park Square** 20 Productions

including: *Sexy Laundry*,  
*Opus*, *Rock 'n' Roll*, *The*  
*Sisters Rosensweig*, *Agnes*

*of God*, *Steel Magnolias*, *The O'Conner Girls*,  
*Enchanted April*, *The Waiting Room*, *Of Mice*  
*and Men*, *Taking Sides*, *The Cryptogram*, *Hamlet*,  
*The Crucible*, *Equus*, *A View From the Bridge*,  
*The Glass Menagerie* **Representative Theatre**

The Refreshment Committee: *The Clearing*,  
*The Scarlet Letter*; Theatre Max: *Detective*  
*Fiction* by Patrick Coyle (World Premiere);  
Sell the Cow Theater and The Playwrights'

Center: *Uncommon Phenomena*; University of  
Minnesota Theatre: *The Three Sisters*, *Mourning*  
*Becomes Electra* **TV/Film** *Forevermore*: Written

and Directed by Patrick Coyle **Training M.F.A.**,  
Directing Program, University of Minnesota (3  
years) **Awards/Other** Critic's Choice Awards:

*The Glass Menagerie*, *A View from the Bridge*,  
*The Scarlet Letter*; Kendrick Wilson Directing  
Award: *The Three Sisters*, *Mourning Becomes*  
*Electra*; Sally Ordway Award for Excellence  
in Education; Founded Park Square Theatre  
Education Program in 1994 and has served as  
Director of Education for over 21 years.

### MARYBETH GAGNER

Costume Designer

**Park Square** *Shooting Star*, *Johnny Baseball*,  
*Sherlock Holmes and the Case of the Jersey*  
*Lily*, *A Midsummer Night's Dream*, *Equus*

**Representative Theatre** *Ordway: A Chorus*  
*Line*; Illusion Theater: *Love and Marriage*;

James Sewell Ballet: *Dance Forms* **Training**  
**M.F.A.**, Costume Design, University of

Washington, Seattle **Upcoming Projects**

Stuart Pimsler Dance and Theater: *Matinee*



"Members of Actors' Equity Association, the Union of Professional Actors and Stage Managers in the United States. Actors' Equity Association (AEA) was founded in 1913 as the first of the American actor unions. Equity's mission is to advance, promote and foster the art of live theatre as an essential component of our society. Today, Equity represents more than 40,000 actors, singers, dancers and stage managers working in hundreds of theatres across the United States. Equity members are dedicated to working in the theatre as a profession, upholding the highest artistic standards. Equity negotiates wages and working conditions and provides a wide range of benefits including health and pension plans for its members. Through its agreement with Equity, this theatre has committed to the fair treatment of the actors and stage managers employed in this production. AEA is a member of the AFL-CIO and is affiliated with FIA, an international organization of performing arts unions. For information, visit [www.actorsequity.org](http://www.actorsequity.org).

### MICHAEL HOOVER

Scenic Designer

**Park Square** Numerous productions

including *Love Person*, *Sexy Laundry*,  
*Mary T. and Lizzy K.*, *Johnny Baseball*,  
*Or*, *Sherlock Holmes and the Suicide*  
*Club*, *Laughter on the 23rd Floor*, *August:*  
*Osage County*, *Opus*, *The Last Seder*,  
*Dead Man's Cell Phone*, *Becky's New Car*,  
*The Sisters Rosensweig* **Representative**


**Theatre** Guthrie Theater: *Choir Boy*, *Juno*

*and the Paycock*, *Skiing on Broken Glass*,  
*Uncle Vanya*, *An Iliad*, *Embers*, *The Edge*  
*of Our Bodies*; History Theatre: *Baby*

*Case*, *Nellie*, *Lombardi*; Theater Latté Da:  
*Gypsy*, *Beautiful Thing*, *Song of Extinction*,  
*Floyd Collins*, *La Bohème*; Torch Theater:

*Death and the Maiden*, *Prints*, *Les Liaisons*  
*Dangereuses*, *Glengarry Glen Ross*;

Minnesota Jewish Theatre: *The Tale of the*  
*Allergist's Wife*, *The 27th Man*, *Jericho*, *Stars*  
*of David*



**OLD LOG THEATRE**

**OPENING JUNE 18**

**MILLION DOLLAR QUARTET**

A Tony Award winning, rock 'n' roll musical inspired by the true story of **ELVIS** Presley, Johnny **CASH**, Jerry Lee **LEWIS** and Carl **PERKINS** coming together for the greatest jam session of all time!

**TICKETS:**  
**OLDLOG.COM | 952.474.5951**

**KATHARINE HOROWITZ**

Sound Designer

**Park Square** *Sons of the Prophet, Romeo and Juliet, My Children! My Africa!, Sexy Laundry, Sherlock Holmes and the Adventure of the Suicide Club, Doubt* **Representative Theatre** Second City Theatricals, Pillsbury House Theatre, Mixed Blood Theatre, Mu Performing Arts, Girl Friday Productions, Walking Shadow Theatre Company **Training** B.A., Theatre Arts, University of Iowa **Awards/Other** Member, Theatrical Sound Designers and Composers Association; 2010 Artist to Watch by *Metro Magazine* **Upcoming Projects** Pillsbury House Theatre: *The Children*; Walking Shadow Theatre Company: *The River*

**MICHAEL P. KITTEL**

Lighting Designer

**Park Square** Over 120 productions (as Resident Lighting Designer) including *Great Expectations, The Color Purple, Red, Ragtime, Grey Gardens, Democracy, To Kill a Mockingbird, Rock 'n' Roll* **Representative Theatre** Ordway, Frank Theatre, Stages Theatre Company, Steppingstone Theatre, Mu Performing Arts, Bloomington Civic Theatre **TV/Film** tpt: The St. Olaf Christmas Festival **Training** University of Wisconsin-River Falls **Awards** Ivey Award for *The Pillowman* (Frank Theatre); *Lavender Magazine* 2008 & 2009 Best Lighting Design

**LAURA TOPHAM\***

Stage Manager

**Park Square** *The Diary of Anne Frank, Jacob Marley's Christmas Carol, A Midsummer Night's Dream, Of Mice and Men, Sherlock Holmes and the Ice Palace Murders, 33 Variations, The Red Box, Mary T. & Lizzie K.* **Representative Theatre** Mixed Blood Theatre: *DJ Latinidad's Latino Dance Party*; Ordway: *Flint Hills Children's Festival*; Theater Latté Da: *Beautiful Thing* **Training** B.A., Theatre Arts, University of Minnesota **Upcoming Projects** Park Square: *The Realistic Joneses*

**DISTINCTIVE HOMES...**

762 OSCEOLA AVENUE, ST. PAUL

Delightful Crocus Hill 4BR/3BA  
\$685,000

1700 MOUNT CURVE, MINNEAPOLIS

Landmark Lowry Hill 3BR/3BA Modern  
\$2,300,000

3901 POPLAR DRIVE, GOLDEN VALLEY

Serene, spectacular renovated 4BR/4BA  
\$850,000

Call us for your private showing.

**FRAN & BARB DAVIS**

612.925.8408 | franandbarbdavis.com | 612.554.0994





## ARTISTIC STAFF

### ABBEE WARMBOE

Properties Designer

**Park Square** *Great Expectations, The Language Archive, The Color Purple, The House on Mango Street, The Red Box, Cyrano* **Representative**

**Theatre** Mixed Blood Theatre: *Charm*; Theater Latté Da: *Gypsy*; Mu Performing Arts: *You For Me For You*; Yellow Tree Theatre: *Violet*; Theater Pro Rata: *Knight of the Burning Pestle* **Training** B.A., Theatre, Film Studies, St. Olaf College

**Awards** 2015 Ivey Award Recognition in Production Design for *Crime and Punishment*

**Upcoming Projects** Mu Performing Arts (at Park Square): *tot: The Untold, Yet Spectacular Story of (a Filipino)* Hulk Hogan

### KEELY WOLTER

Dialect Coach

**Park Square Debut** **Representative Theatre** Jungle Theater: *Le Switch*; Old Log Theater: *Million Dollar Quartet*; Theater Latté Da: *Sweeney Todd*; Artistry: *Blithe Spirit* **Training**

B.A., Theatre Performance, Viterbo University; M.A., Voice Studies, Royal Central School of Speech and Drama

## Production Staff & Crew

Run Crew: Rachael Rhoades, Chandler Hull  
Sound Operator: James Harding  
Wardrobe Supervisor: Clara Cavins-Wolford  
Technical Director: Rob Jensen  
Assistant Technical Director: Ian Stoutenburgh  
Paint Charge: Angelique Powers  
Lead Carpenter: Matt Erkel  
Carpenter: James Duncan, Zeb Hults  
Master Electrician: Tony Stoeri  
Electricians: Karin Olson, Jeremy Ellarby, Jesse Cogswell, Micayla Thebault-Spieker

## Special Acknowledgements

Park Square would like to thank:  
Lucinda Holshue, Patrick Esmonde, Terri Rea (Ruby Ribbon Consultant), Sasha Andreev



## Beats Botox

Don't chase looking younger,  
embrace looking *better*.  
Our optician magicians  
send your age in remission!

ST. PAUL • UPTOWN • NEW BRIGHTON • BURNSVILLE 888.797.EYES [spectaclshoppe.com](http://spectaclshoppe.com)



# 10 out of 10 optimists believe in themselves.



The difference between impossible and possible often starts with a person saying, "I think I can." At U.S. Bank, we think you can too. And with our competitive products and services, we're here to help in every way we can.

PERSONAL | BUSINESS | WEALTH MANAGEMENT



Find your possible at a U.S. Bank branch,  
call 800.825.BANK (2265),  
or visit [usbank.com/possible](http://usbank.com/possible).



*the POWER of POSSIBLE.*

Investment products are:



**NOT FDIC INSURED | MAY LOSE VALUE | NOT GUARANTEED BY THE BANK | NOT A DEPOSIT | NOT INSURED BY ANY FEDERAL GOVERNMENT AGENCY**  
Credit products offered by U.S. Bank National Association and subject to normal credit approval. Deposit products offered by U.S. Bank National Association. Member FDIC. ©2016 U.S. Bank.  
"World's Most Ethical Companies" and "Ethisphere" names and marks are registered trademarks of Ethisphere LLC.

# THE 2016-2017 SEASON. *SUBSCRIBE TODAY!*

## **The Liar**

Sept 9 – Oct 2, 2016 *Comedy*

By David Ives; Directed by Doug Scholz-Carlson  
Adapted from *Le Menteur* by Pierre Corneille  
Area Premiere

## **The Realistic Joneses**

Sept 23 – Oct 16, 2016 *Comedy/Drama*

By William Eno; Directed by Joel Sass  
Area Premiere

## **The House on**

**Mango Street** (Season Extra)

Special Performances Oct 21 & 22, 2016 *Memoir*

Student Matinees Oct 12 – Nov 4, 2016

Written by Sandra Cisneros; Adapted by  
Amy Ludwig; Directed by Signe V. Harriday  
New Production Freshly Imagined for the Proscenium Stage!

## **A Raisin in the Sun**

Oct 28 – Nov 20, 2016 *Drama*

By Lorraine Hansberry  
Directed by Warren C. Bowles

## **The Soul of Gershwin: The Musical Journey of an American Klezmer**

Dec 2 – 31, 2016 *Musical*

Music and Lyrics by George Gershwin  
and Ira Gershwin; Additional Lyrics from  
*Porgy and Bess* by DuBose Heyward  
Created and Written by Joseph Vass  
Directed by Peter Moore

Sandbox Theatre presents

## **Big Money**

Jan 12 – 28, 2017 *Drama/Comedy*

World Premiere Created by the  
Sandbox Theatre Ensemble  
Led by Derek Lee Miller

Make today's ticket the start of  
your new subscription!

Just add two or more of these plays for as  
little as \$25 per seat\* to enjoy guaranteed  
seats and all the subscriber perks.  
Call 651.291.7005

Historic Hamm Building | 20 West 7th Place | Saint Paul

651.291.7005

[parksquaretheatre.org/  
subscribe](http://parksquaretheatre.org/subscribe)

## **THE GREAT AMERICAN PLAY**

*The Washington Post*  
hails *A Raisin in the Sun*  
as "one of a handful of  
great American plays..."

## **THE BROADWAY MUSICAL**

Celebrating 25 years  
of Mu Performing Arts  
with *Flower Drum Song*



## Flower Drum Song

Jan 20 – Feb 19, 2017 *Musical*

Music by Richard Rodgers

Lyrics by Oscar Hammerstein II

Book by David Henry Hwang

Directed by Randy Reyes

Co-Production with Mu Performing Arts

## Nina Simone: Four Women

Feb 7–26, 2017 *Play with Music*

By Christina Ham; Directed by Faye M. Price

World Premiere Commission

## Macbeth

Mar 17 – Apr 9, 2017 *Tragedy*

By William Shakespeare

Adapted and Directed by Jef Hall-Flavin

World Premiere Commission

## The (curious case of the) Watson Intelligence

April 7–30, 2017 *Comedy/Drama*

By Madeleine George; Directed by Leah Cooper

2014 Finalist, Pulitzer Prize for Drama

Area Premiere

## Amy's View

May 12 – June 4, 2017 *Drama*

By David Hare

Directed by Gary Gisselman

Regional Premiere

Theatre Pro Rata presents

## Up: The Man in the Flying Chair

May 25–Jun 11, 2017 *Comedy/Drama*

By Bridget Carpenter

Directed by Carin Bratlie Wethern

Regional Premiere

## Might as Well Be Dead: A Nero Wolfe Mystery

Jun 16 – Jul 30, 2017 *Mystery*

By Joseph Goodrich; Directed by Peter Moore

Adapted from the Novel by Rex Stout

World Premiere Commission by our Mystery

Writers Producers' Club

Girl Friday Productions presents

## Idiot's Delight

Jun 29 – Jul 23, 2017 *Comedy/Drama*

By Robert E. Sherwood

Directed by Craig Johnson

1936 Pulitzer Prize for Drama

Red = Proscenium Stage

Blue = Andy Boss Thrust Stage

\*All "starting at" prices based on preview prices, standard seats

## THE DETECTIVE GENIUS

Nero Wolfe returns in

*Might as Well Be Dead*



# OUR CONTRIBUTORS

## ANNUAL FUND CORPORATIONS, FOUNDATIONS AND GOVERNMENT

### \$100,000+

Caroline's Kids Foundation  
The McKnight Foundation  
Minnesota State Arts Board\*

### \$50,000+

Target Foundation

### \$25,000-49,000

3M Foundation  
Aroha Philanthropies  
F.R. Bigelow Foundation  
The Mardag Foundation  
Margaret H. & James E. Kelley  
Foundation  
John Larsen Family Foundation  
Shakespeare in American  
Communities  
Shubert Foundation  
The Saint Paul Foundation

### \$10,000-24,999

Fred C. & Katherine B. Andersen  
Foundation  
Hugh J. Andersen Foundation  
Boss Foundation  
City of St. Paul Cultural STAR  
Deluxe Corporation Foundation  
Ecolab Foundation  
EMC Paradigm Publishing\*  
General Mills Foundation  
Harlan Boss Foundation  
for the Arts  
K Foundation  
Ruth Easton Fund of the  
Edelstein Family Foundation  
Walter McCarthy and Clara Ueland  
through the Greystone Foundation  
National Endowment for the Arts  
RBC Wealth Management Foundation  
Scooby Foundation  
Travelers  
VSA Arts of Minnesota  
Xcel Energy Foundation  
Wells Pianos\*  
  
**\$5,000-9,999**  
RW Baird Foundation, Inc  
Hardenbergh Foundation  
The Hubbard Broadcasting  
Foundation



\*This activity is made possible by the voters of Minnesota through a Minnesota State Arts Board Operating Support grant, thanks to a legislative appropriation from the arts and cultural heritage fund, and a grant from the Wells Fargo Foundation of Minnesota.

James B. Linsmayer Foundation  
JP Morgan Chase  
Macy's Foundation  
Michaud, Cooley, Erickson  
David and Karen Olson Family  
Foundation  
Securian Foundation  
Standard Heating &  
Air Conditioning  
Thomson Reuters  
Zelle Hofmann

### \$2,500-4,999

Highlands Foundation  
The Poehler-Stremel Charitable  
Trust  
Robins, Kaplan, Miller & Ciresi  
L.L.P.  
Lillian Wright &  
C. Emil Berglund Foundation

### \$1,000-2,499

Dramatist Guild Fund  
One Beacon Charitable Trust  
UBS Financial

## INDIVIDUALS

### CHAMPIONS \$25,000+

Anonymous  
John Larsen through the  
John Larsen Foundation  
Hella Mears  
Betty Anderlik in memory  
of Joseph Anderlik  
Linda Boss  
David Duddingston &  
Clayton Halunen  
Richard & Nancy Nicholson  
Timothy & Gayle Ober

### DIRECTORS \$10,000+

Anonymous  
John Burbidge  
Peter Maye & Betsy Cobb  
Nancy J. Feldman  
Paul & Pat Sackett

### FANS \$5,000+

John Clarey &  
Robyn Hansen  
Ted Ferrara  
Jerri Freier  
Dave Gilbertstadt  
Phyllis Goff  
Karen B. Heintz  
Paul & Renee Johnson  
Eric & Celita Levinson  
Benedict & Rita Olk  
Peter & Sara Ribbens  
James Rustad & Kay Thomas

Joe & Christi Schmitt  
Paul Stembler &  
Mary Ebert  
George Tyson  
Melinda Urion  
Helen Wagner  
John & Sandra White

### LEADERS \$2,500+

Anonymous  
Suzanne Ammerman  
Corrie Ooms Beck  
John L. Berthiaume &  
Dr. Joanne B. Votel  
Chris & Rolf Bolstad  
Allan & Mary Lou Burdick  
Don & Julie Cox  
Jim & Dianne Falteisek  
David & Genevieve Freier  
Jewelle Grape  
The John W. Harris Family  
Ray & Jan Krause  
John & Jeanne LeFevre  
James & Sharon Lewis  
Steven Kent Lockwood &  
Richard Cook  
Paul & Tara Mattessich  
Thomas Park & Kari Ruth  
Greg & Naomi Pesky  
Joan T. Smith  
James & Miriam Stake  
Dr. & Mrs. Edward Szalaski  
Michael & Terry Uline  
Fred & Alice Wall  
Susan Wenz

### PACSETEERS \$1,500+

Tim & Sara Beckstrand  
Nancy & Jerry Carroll\*  
Charles & Laura Cochrane  
Robin Dietz-Mayfield  
Kristin Geisler  
Andrea Trimble Hart  
Jeff & Kathy Johnson  
David Kelm &  
Carolyn Sorensen  
Wesley & Deirdre Kramer  
Kent & Diane Krueger  
John & Karen Larsen  
Jim & Diana Lewis  
Jack & Jeanne Matlock  
Rosanne Nathanson  
Douglas & Carol Ogren  
Joel Pace & Caldwell Camero  
Scott T. &  
Jennifer Norris Peterson  
Thue & Uttara Rasmussen  
Thomas & Nancy Rohde  
Paula Schad & Bruce Lily  
John L. Sullivan

### GUARANTORS \$1,000+

Anonymous (2)  
Winston & Barbara Adams  
Steve & Nancy Apfelbacher  
Marcia J. Aubineau  
Bruce & Lynne Beck  
Jeffrey Bores &  
Michael Hawkins  
C.C. & Dawn Clawson  
R. Michael &  
Sharon Conley  
The Crabb Family, Ken, Gwen,  
Casey & Rachael  
Barb Davis  
Fran Davis  
Tom & Mary Lou Detwiler  
Richard & Jane Donovan  
Joan Duddingston  
Hugh & Joyce Edmondson  
Tim & Susan Flaherty  
Edward Fox  
Therese Gahler  
Deb & Phil Gelbach  
Margaret Gunther  
Douglas Heidenreich  
David & Ann Heider  
Sharon Hildrum  
Scott Housh  
Robert & Lucille Ingram  
Bruce & Jean Johnson  
Bruce Jones & Joann Nordin  
Thomas & Mary Krick  
James LaFave  
William & Virginia McDonald  
Carol Millar  
C. Michael-jon Pease &  
Christopher Taykalo  
Steve & Deb Ragatz  
The David Robinson &  
Janet Ekern Fund of the  
Saint Paul Foundation  
Susan Rostkoski  
Ken & Nina Rothchild  
Edwin & Jennifer Ryan  
Dan & Emily Shapiro  
Connie Shaver\*  
Sarah Stevenson  
in memory of Gary Berggren  
Irene Suddard  
Missy Staples Thompson &  
Gar Hargens  
Bernie & Deborah Weiss  
Robert & Barb Wieman  
Ann Wynia  
Diane Young  
Richard & Janine Zehring



## BENEFACTORS \$500+

Carolyn M. Adams  
Janet Albers  
Bradley & Roberta Allen  
William A. Anderson  
Kay Bach  
Ms. Ani Backa  
John & Barbara Balfanz  
Judy Bartlett  
Thelma Boeder  
Susan Cammack  
Paul & Tina Casey  
Karin Collins in memory of  
Dr. Thomas Collins  
Jay & Page Cowles  
Kathy Cristan  
Buzz & Judy Cummins  
Carolyn Fiterman  
K. Paul Freborg  
John Gillen in memory of  
Lawrence Pierson  
Bess Gold  
Jennifer Gross  
Reynolds & Mary Guyer  
Charles & Margarette Hann  
Alfred & Ingrid Lenz Harrison  
Jeffrey Hatcher  
Jack & Lisa Hauser  
William & Linda Holley  
Gerald Holt  
Mary Jacobs  
Merrily Karel  
Laura McCarten  
Chris & Daniel Mahai  
Patricia Mitchell  
Richard & Joan Newmark  
Robert & Megan O'Leary  
Ms. Jewel Olson  
Russell & Kathryn Rhode  
Tim & Kim Scanlan  
Clark Schroeder &  
Summer Seidenkranz  
Art & Jan Seplak  
Ronald-Craig &  
Mariana Shulstad  
Anne Simpson  
Debbie Smith  
Harlan & Marlene Stoehr  
Douglas J. Stubeda  
Barbara & Randy Sutter  
Jon & Lea Theobald  
Andrew Tucker  
Jennifer Wagner &  
James Vogel  
James & Linda Wallace

## SUSTAINERS \$250+

Anonymous (3)  
Elizabeth Andrews  
Nicole Ankeny  
Terry Banaszewski  
Susan Baxter  
Robert & Mary Beck  
Dan & Dee Bender  
Susan & James Berdahl  
Iris Bierbrauer  
Laura & Jon Bloomberg  
Stuart & Sue Ellen Borken  
Char Brooker  
Jane Carlstrom &  
Dave Decker  
Ron & Kathy Colby  
Roger Cone  
Dr. Joy L. Davis  
Mr. Jason Doescher  
Sheila Faulkner  
Richard & Beverly Fink  
Frank & Judith Foss  
Mike & Carol Garbisch  
Nancy & Jack Garland  
Burl & Louetta Gengenbach  
Doug Hill  
Mr. Kurt Hochfeld  
Robin Hubbell  
Todd & Mary Jacobson  
Mary A. Jones  
Nancy Jones  
Art & Martha Kaemmer  
Alfred & Sharon Kauth  
Susan Kimberly  
William & Janice Kimes  
Peter & Bonnie Kramer  
Laurel Krause & Ross Collins  
Katherine Kudzy  
Keith Kuffel  
Ruth Ladwig  
John & Colles Larkin  
Mr. James &  
Carrie Lichtenberg  
Mary & David  
Lundberg-Johnson  
Edward & Judith Malecki  
Tony Manzara  
in Memory of Sally  
Jim & Liane Mattson  
Ron & Mary Mattson  
Scott Mayer  
Sue McAllister  
Rita McConnell  
Dennis McGuire  
Ed Moersfelder

## Beverly Ward Montgomery

James & Nancy Mulvey  
Joann Nelson  
Merritt Nequette  
in memory of  
Pauline Lambert  
Theodore Neuhaus  
Michael & Kay O'Brien  
Mary O'Keefe  
K. J. Olson  
Jim Ostlund  
Bonnie Palmquist  
Don & Kathy Park  
James Persoon &  
Barbara Schmidt  
Sidney & Decima Phillips  
Nicole & Charlie Prescott  
Brad & Linda Quarterer  
Barbara & William Read  
Lawrence Redmond  
Nancy & Kevin Rhein  
Lori Ricke & Eric Dunn  
Chuck & Terri Roehrick  
Jack & Judy Schlukiebert  
Jim Seidel  
David & Ann Smith  
Lee and Lois Snook  
Mark & Cindy Stange  
Erica Stern  
Stanley & Connie Suchta  
Donald M. &  
Ruth Patricia Sullivan  
Ms. Lynda Summerville  
Mary S. Tarman  
Orlette Tatley  
Shirley Taube  
Beverly & Edwin Thiede  
Rebecca Tofte  
Gerald & Beth Voermans  
Leon & Lindy Webster  
Carol Westberg  
Claudia & Don Wiebold  
Virginia Yingling  
Billie Young  
Petronella J. Ytsma &  
Mark Sauer  
Sheri Zigan

## CONTRIBUTORS \$150-249

Robert Baker &  
Margo Mickelson  
J. Michael Barone  
Tamara Bergan  
Pam & Mark Bintzler  
Susan Bjerke  
Carol Bossman

Judy & Arnold Brier  
Linda Carlstedt  
David Colwell  
David & Evelyn Coslett  
Margaret E. Durham  
Joann Englund  
Caroline & H Dutton Foster  
Sandy Gehrman  
Robert & Becky Glesne  
Sara Graffunder  
Ms. Olive Grose  
Mr. Noah Hauser  
Mary Hicks  
Joanne Howe  
Nicole Hyer  
Nicola & Craig Hyser  
Paul Kittel  
Patricia Koors  
Sara Kueths  
David and Pamela Lande  
Michael Mallory &  
Catherine Gray  
Ann Marckle  
Mary Markgraf  
Dr. Virginia McFerran  
Kathleen McLeod & Eric Hepp  
Gerald Meigs  
Joan & Rob Mitchell  
Charles Nelson  
Muriel Nelson  
John Orbison  
Eric & Jo Ann Pasternack  
Warren & Ann Peterson  
Katherine & Mitchell Pincus  
Nancy & James Proman  
Sharon Radman  
Bill & Leola Rempel  
Allan Riel  
Catherine & Ferrol Robinson  
Shelly Rucks  
Michael Ryan  
William & Glenn Schlukiebert  
Jane Schmidt  
Ms. Beth Schumacher  
Bruce & Julianne Seiber  
Michael & Sherry Spence  
Marcia & John Stout  
Rebecca Bradbury Stout  
Michael Symeonides  
Joyce Thielen  
Avinere Toigo  
John E. Welckle  
Kevin Winge  
Rosalie & John Wosepka  
\* in-kind gift

**Many thanks to ALL our donors. Every gift makes a difference and all donors are listed at [parksquaretheatre.org/contribute/individualsupport](http://parksquaretheatre.org/contribute/individualsupport)**

Individual support was received between 1.1.2015 and 3.31.2016. Please help keep our records correct by contacting us with any changes or oversights. Contact Michael-jon Pease at 651.767.8497 or [pease@parksquaretheatre.org](mailto:pease@parksquaretheatre.org)



## PARK SQUARE STAFF

Richard Cook, Artistic Director  
Michael-jon Pease, CFRE, Executive Director

### ARTISTIC

Rob Jensen, Technical Director  
Ian Stoutenburgh, Assistant Technical Director  
Megan West, Production Manager  
Jamil Jude, Artistic Programming Associate  
Michael P. Kittel, Resident Lighting Designer  
Matt Erkel, Lead Carpenter  
John White, Literary Management Volunteer  
Jack Romans, Shelby Reddig, Michael Karadsheh:  
Production Interns

### EDUCATION

Mary M. Finnerty, Education Director  
Megan Losure, Education Sales & Services Manager  
Connor M. McEvoy, Education Assistant  
Alexandra Hatch, Education Assistant  
Marcia Aubineau, Post-show Discussion Moderator  
Arianna Diaz-Celon, Education Intern  
**Immersion Day and Ambassador Program Teaching**  
**Artists:** Tessie Bundick, Josh Campbell, Shanan Custer,  
Carson Kreitzer, Annie Ennekings, Mary K. Flaa,  
Christina Ham, H. Adam Harris, Steve Hendrickson,  
Brian Hesser, Katharine Horowitz, Stephen Houtz,  
JuCoby Johnson, Aditi Kapil, Mike Kittel, Kym Longhi, Katy  
McEwen, Leslye Orr, Joe Papke, Aaron Preusse, Doug  
Scholz-Carlson, Jen Scott, Dane Stauffer, Anna Sundberg,  
Regina Marie Williams

### EXTERNAL RELATIONS

Connie Shaver,  
Marketing & Audience Development Director  
Rachel E.H. Bentley,  
Marketing & Development Associate  
Lynne Beck, Development Consultant  
Jim Heideman, Telemarketing Services  
Alicia Pedersen, Marketing Assistant  
Sam Johnson, Marketing Intern

### FINANCE AND OPERATIONS

Sheri J. Zigan, Finance & Operations Director  
Jackson Smith, Accounting Associate  
Morgan Jensen, Accounting Volunteer  
Dave Peterson, Facility & Event Manager  
Tyshiana Mahomes and John Romano,  
Facility & Event Associates  
Amanda Lammert, Audience Services Director  
**Front of House Staff: (Evening)** Jiffy Kunik - Performance  
Supervisor; Adrian Larkin, Ashe Jaafaru, CJ Pitts, Federic  
Nobello, Jackson Smith, Jimmy Vincent, Kasey Tunell,  
Mariah Christensen, Matt Cawley, Michelle Clark, Mina  
Kobayashi, Missy Keller, Sarah Bauer, Vince Hannam,  
Taylor Seaberg, Trevor Plate, Justin Campbell, Kristen  
Parizek; **(Daytime)** Adrian Larkin - Lead House Manager;  
Federic Nobello, Staci Sathre - House Managers; Gayle  
Smith, Louise Rosemark, Ann Feider, Patricia Arnold,  
Paula Manzuk, Ting Ting Cheng, Jimmy Vincent  
**Ticket Agents:** Ben Cook-Feltz, Jimmy Vincent,  
Kristen Parizek  
**Usher and Friday Morning Club Coordinator:** Judy Bartlett

### ARTISTIC ASSOCIATES

Aditi Kapil, Playwright, Director and Actor; Carson  
Kreitzer, Playwright; Ricardo Vázquez, Playwright and  
Actor; James A. Williams, Director, Actor and Teacher

### ACCESS SERVICES STAFF

Audio Description: Rick Jacobson; American Sign  
Language Interpreters: Mary Baremore, Elly Carpenter,  
Paul Deeming, Shelley Lehner, Susan Masters,  
Charlette Reiner; Open Captioning: Kathleen Conroy,  
Jill Vaughn

### CONSULTANTS

Assignment Writer: Matt DiCintio; Auditor: Clifton  
Larson Allen; Community Engagement Consultants:  
Jamil Jude, Alicia Wiesneth; Disability Advisor:  
Jill Vaughn; Graphic Designer: Madge Duffey;  
Photographer: Petronella J. Ytsma; Videographer:  
Michael Hanisch; Volunteer Curators: Jennifer Bisch,  
Toni Dachis, Roger Nielsen

### VOLUNTEERS

Friday Morning Club: Susan Adix, Doreen Aszmus,  
Sue Bjerke, Jerry and Nancy Carroll, Pat Dalluhn,  
Monica Fritzen, Betty Markland, Pat Sackett; Thanks to  
all of our Volunteer Ushers

## WILL YOU BE OUR *Ms. or Mr. July?*

Our fiscal year closes  
shortly after this production.  
Your gift little or lavish  
will make a difference.

(Photos of yourself are optional.)

[parksquaretheatre.org/  
contribute](https://parksquaretheatre.org/contribute)



# 2016–2017 SEASON

SEP 2016



OCT 2016



DEC 2016



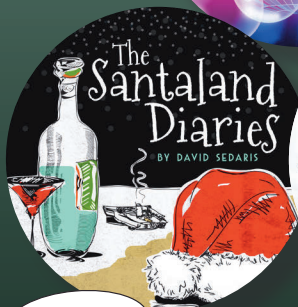
MAR 2017



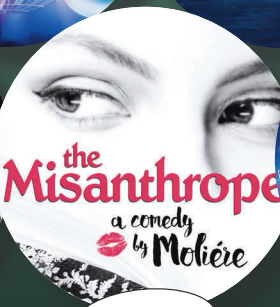
MAY 2017



DEC 2016



JAN 2017



JUN 2017



## *Experience the arts*

**AND ALL THAT LA CROSSE HAS TO OFFER!**

**Make a day or evening of it and enjoy the many shops  
and restaurants in downtown La Crosse!**

LA CROSSE   
**community**  
THEATRE

608-784-9292 [www.lacrossecommunitytheatre.org](http://www.lacrossecommunitytheatre.org) 428 Front Street S, La Crosse

## BOARD OF DIRECTORS

Tim Ober (President) *President, Red Oaks of Dakota County Inc.*  
 John L. Berthiaume (Vice President)  
*VP, Financial Advisor, RBC Wealth Management*  
 Karen Heintz (Treasurer)  
*Senior VP, Branch Manager, Robert W. Baird*  
 Kristin Taylor Geisler (Secretary) *Principal, Iris Consulting, LLC*  
 Elizabeth H. Cobb *Managing Counsel, Legal Services, Travelers*  
 Barb Davis *Realtor, Coldwell Banker Burnet*  
 Jim Falteisek *Sales and Marketing Director, 3M*  
 Nancy Feldman *President and CEO, UCare, Retired*  
 Jewelie Grape *Partner, Stinson Leonard Street*  
 Andrea Trimble Hart *CPCU, Senior VP, Willis of Minnesota, Inc.*  
 Lori Jenkins *Consultant, Guardian Appraisals*  
 Jeff Johnson (Immediate Past President) *CFO, Amesbury Truth*  
 Paul Johnson *VP, Investor Relations, Xcel Energy*  
 John LeFevre *Community Volunteer (Deluxe, Retired)*  
 Paul Mattessich *Executive Director, Wilder Research Foundation*  
 Kari Ruth *Director of Strategic Communications, Hennepin Theatre Trust*  
 Paul Sackett *Professor of Psychology and Liberal Arts, University of Minnesota*  
 Joseph W.E. Schmitt *VP, Chief Claims Counsel, OneBeacon Insurance Group*  
 Paul Stembler *Consultant*  
 Helen Wagner *Community Volunteer (3M, Retired)*  
 Susan Wenz *Director of Programming – KSTP-TV & 45TV*



Best Twin-Cities Jazz Club  
*-City Pages*  
 Best of 2016  
*-Star Tribune*

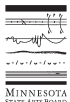
Your Park Square Ticket Stub  
 Gets You In Free  
*Good Night-of-Show Only*

LIVE MUSIC  
 MENU UNTIL MIDNIGHT  
 HAPPY HOUR 5pm-7pm  
 Downtown, Downstairs. Historic Hamm Building, Saint Paul, MN

## PARK SQUARE INFORMATION

### CONTACT

Park Square Theatre  
 408 St. Peter Street, Suite 110, Saint Paul, MN 55102  
 Ticket Office: 651.291.7005  
 Usher Hotline: 651.767.8489  
 Education: 651.291.9196  
 Donor Development: 651.767.8485  
 Audience Services & Group Sales: 651.767.8487  
 Audition Hotline: 651.767.8491



These activities are made possible by the voters of Minnesota through a Minnesota State Arts Board Operating Support grant, thanks to a legislative appropriation from the arts and cultural heritage fund, and a grant from the Wells Fargo Foundation Minnesota.

## EDUCATOR ADVISORY BOARD

Marcia Aubineau (University of St. Thomas, retired)  
 Theodore Fabel (South High School)  
 Craig Farmer (Perpich Center for Arts Education)  
 Amy Hewett-Olatunde (LEAP High Schools)  
 Cheryl Hornstein (Freelance Theatre and Music Educator)  
 Alexandra Howes (Twin Cities Academy)  
 Dr. Virginia McFerran (Perpich Center for Arts Education)  
 Kristin Nelson (Brooklyn Center High School)  
 Mari O'Meara (Eden Prairie High School)  
 Jennifer Parker (Falcon Ridge Middle School)  
 Maggie Quam (Hmong College Prep Academy)  
 Kate Schilling (Mound Westonka High School)  
 Jack Schlubeckier (Central High School, retired)  
 Elizabeth Seal (Mounds Park Academy)  
 Tanya Sponholz (Prescott High School)  
 Jill Tammen (Hudson High School, retired)  
 Craig Zimanske (Forest Lake Area High School)

## THEATRE AMBASSADORS

Brianna Flasch (Forest Lake Area High School),  
 Alexandra Hatch (St. Paul Conservatory for Performing Artists), Katelyn Henslin (SPCPA), Thea Meyer-Grimberg (SPCPA), Jonah Schmitz (Buffalo High School), Johnny Stang (Cretin-Derham Hall High School), Katherine Swartzter (Buffalo High School), Nathaniel Davis (SPCPA), Arianna Diaz-Celon (SPCPA), Schyler Fish (Highland Park Senior High), Greta Hallberg (Minnehaha Academy), Madisyn Haukland (Coon Rapids High School), Kristal Jackson (SPCPA), Emma Lewis (South Saint Paul High School), Seth Retzlaff (Minnehaha Academy), Katelyn Storch (Perpich Center for Arts Education), Celia Tise (SPCPA), Claire Umolac-Bunker (Highland Park Senior High), Belle Wanke (Buffalo High School), Ozomatli Zarate (SPCPA)

### TICKET OFFICE HOURS

#### Tuesday – Friday:

12:00 – 5:00pm & 6:30 – 8:00pm (performance days only)  
 12:00 – 5:00pm (non-performance days)

**Saturday:** 2:00 – 8:00pm\* (performance days only)

\*For Saturday matinees, ticket office and phone lines open at 12:30pm

**Sunday:** 12:30 – 3:30pm (performance days only)



Proscenium Stage seats 348. Andy Boss Thrust Stage seats 203. The Historic Hamm Building is smoke-free. Latecomers are seated at the discretion of the House Manager. Restrooms and water fountains on main floor and lower level. Cameras/audio/video equipment and laser pointers prohibited.



**to the committee, sponsors, artists, donors, attendees  
and bidders at our Springtime in Paris Gala 2016!**

Your generosity and fun-loving spirit helped us raise a record \$105,000 to support our student audience of 33,000 – the largest teen theatre audience in the nation!

**Event Sponsors:**



Flowers on the Park  
William Kent Krueger

Revival Wine & Spirits  
Dave & Genny Freier

Tim & Gayle Ober  
Ben & Rita Olk

**Gala Committee:**

Jeanne Matlock & Kay Thomas (Co-Chairs)	Genny Freier & Judy Haigh (Silent Auction Co-Chairs)
Nicole Ankeny & Lynne Beck (Decorations Co-Chairs)	Jim Falteisek & Paul Johnson (Sponsorship Co-Chairs)
Deb Ragatz (Gifts/Favors Chair)	Betsy Cobb & Ray Krause (Table Co-Chairs)

**Auction Donors:**

3M	William Kent Krueger	Saint Paul Saints
Nancy Ankeny	Landmark Jewelers	Salt Cellar
Steve & Nancy Apfelbacher	Jack & Jeanne Matlock	Jill Schumacher, Fine Artist
Ecolab	Daisi and Jim Martin	Meg Stevenson & Associates
Mary Pat Byrne, Fine Artist	Meritage	Landscape Consultation
Dan & Jerri Freier	Minnesota Twins	Summit Brewing Company
Dave & Genny Freier	R. F. Moeller Jewelers	Kay Thomas & Jim Rustad
Robyn Hansen & John Clarey	Michael-jon Pease & Christopher Taykalo	Xcel Energy

*Save the Date!*

*for next year's Park Square gala:*

**April 17, 2017**



# COMING SOON!

## Two Area Premieres Open the 2016-2017 Season:



### *The* LIAR

**Sept 9 – Oct 2, 2016** Comedy

By David Ives; Directed by Doug Scholz-Carlson  
Adapted from *Le Menteur* by Pierre Corneille

Cliton can't tell a lie. Dorante can't tell the truth. Cue the amazing mix-ups and breathtakingly intricate lies. Sharp and saucy modern language adds zest to this sparkling urbane romance.

### The Realistic JONESES

**Sept 23 – Oct 16, 2016** Comedy/Drama

By William Eno; Directed by Joel Sass

These two suburban couples have more in common than their identical homes and their shared last names. As their relationships intertwine, the Joneses must choose between their idyllic fantasies and their imperfect realities.

