

A RAISIN *in the* SUN

By Lorraine Hansberry
Directed by Warren C. Bowles



FEB 22 - MAR 16

on the Andy Boss Thrust Stage

Student Matinees FEB 14 - MAR 23

*Student Matinees made possible
with support from*




PARK SQUARE
THEATRE
2017-2018 SEASON

Dear Park Square Patron:

Welcome to today's show!

As a member of Park Square's recently formed Community Advisory Board (and as a former teacher who has brought many students to this theatre), I am thrilled to see Park Square continue its commitment to the stories of women and artists of color.

So many of the students we inspire are people of color. They deserve to see their unique histories honored with plays like this one. Casting our Shakespeare productions with artists of color – like last fall's *Hamlet* – is another way we give each student a portal into classic literature and the theatrical experience.

Park Square serves the largest 7th-12th grade audience in the country – 33,000 strong. To put that number in perspective, that is almost the entire population of Richfield!

If you are one of those many teens at today's show, I ask you to lean forward, take it all in, and ask hard questions. You are the future. We are all counting on you (*yes you*) to build on the history of the Younger family and to write a new narrative for your generation.

And if you enjoy today's show, be sure to join us next year for *The Agitators* (about the enduring friendship of Susan B. Anthony and Frederick Douglass) and *Marie and Rosetta* (about the godmother of Rock and Roll, Sister Rosetta Tharpe, who was just inducted into the Rock 'n' Roll Hall of Fame).



Enjoy the show –

Patricia Izek

Park Square Theatre Community Advisory Board
Diversity & Inclusion Recruiter, University of Minnesota
Office of Human Resources



OUR MISSION is to enrich our community by producing and presenting exceptional live theatre that touches the heart, engages the mind and delights the spirit.

A RAISIN *in the* SUN

By Lorraine Hansberry

Director Warren C. Bowles
Scenic Designer Lance Brockman
Costume Designer A. Emily Heaney
Lighting Designer Michael P. Kittel
Sound Designer Evan Middlesworth
Properties Designer Sadie Ward
Properties Master Robert “Bobbie” Smith
Choreographer Emily Madigan
Assistant Director Theo Langason
Stage Manager Laura Topham*

CAST

Ruth Younger Ivory Doublette*
Travis Younger Calvin Zimmerman
Walter Lee Younger Darius Dotch*
Beneatha Younger Imani Vaughn-Jones
Lena Younger Cynthia Jones-Taylor*
Joseph Asagai Darrick Mosley*
George Murchison Daniel Coleman
Bobo Derek “Duck” Washington
Karl Lindner Robert Gardner

.....
SETTING: Chicago’s South Side, 1950s

PERFORMANCE TIME: The performance will run
approximately 2 hours, 30 minutes, including one 20-minute intermission.
.....

**As a courtesy to our actors and those around you,
please DEACTIVATE all PHONES and ELECTRONIC DEVICES.**

The videotaping or making of electronic or other audio and/or visual recordings of this production or distributing recordings on any medium, including the internet, is strictly prohibited, a violation of the author’s rights and actionable under United States copyright law. For more information, please visit: www.Samuelfrench.Com/whitepaper

A RAISIN IN THE SUN is presented by special arrangement with SAMUEL FRENCH, INC.

*Member of Actors’ Equity Association, the Union of Professional Actors and Stage Managers in the United States.
Park Square Theatre is a member of Theatre Communications Group (TCG), the national organization for the American theatre.

STORY



a chauffeur, has other plans: buying a liquor store and being his own man. Beneatha dreams of medical school. The tensions and prejudice they face form this seminal American drama. The Younger family's heroic struggle to retain dignity in a harsh and changing world is a searing and timeless document of hope and inspiration.

SET ON CHICAGO'S SOUTH SIDE, the plot revolves around the divergent dreams and conflicts within three generations of the Younger family: son Walter Lee, his wife Ruth, his sister Beneatha, his son Travis and matriarch Lena. When her deceased husband's insurance money comes through, Mama Lena dreams of moving to a new home and a better neighborhood in Chicago. Walter Lee,

CAST



DANIEL COLEMAN

George Murchison

Park Square Debut Representative Theatre

Full Circle Theater:
365 Plays/365 Days;

Penumbra Theatre: *Take a Giant Step*;
Illusion Theater: *Keepin' It Real*; *Six Lives*;
Guthrie Theater: *Appomattox*; Anoka
MainStreet Theatre Company: *Heaven Can Wait TV/Film* Astray, *Dear White People*,
Nice Guys Training Communications,
University of Minnesota **Other** Illusion
Theater Residency Director



DARIUS DOTCH*

Walter Lee Younger

Park Square A Raisin in the Sun, The Color Purple, Stick Fly Representative Theatre Jungle Theater:

Bars and Measures; Children's Theatre Company: *Akeelah and the Bee*; Penumbra Theatre: *Wedding Band, Detroit '67*; Ten Thousand Things: *Intimate Apparel*; Mixed Blood Theatre: *Colossal*; Pillsbury House Theatre: *Marcus; or the Secret of Sweet* and *the road weeps, the well runs dry*; History Theatre: *Lombardi, A Civil War Christmas*; Big Top Chautauqua:

Play Ball Musical Training B.A., Theatre Arts **Awards** Ivey Award for Best Ensemble (*Marcus; or the Secret of Sweet*)



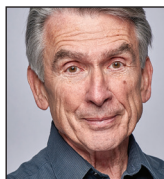
IVORY DOUBLETTE*

Ruth Younger

Park Square Debut Representative Theatre

Ordway: *Annie*; Penumbra Theatre: *Wedding Band*;

MainStreet Theatre Company: *Elephant and Piggie's "We are in a Play!"*; Marriott Theatre: *Dreamgirls*; Chanhassen Dinner Theatres: *Hairspray*; Children's Theatre Company: *Disney's High School Musical TV/Film* My Town Pictures: *His Neighbor Phil Training* B.A., Theatre Arts, University of Minnesota **Upcoming Projects** Theater Latté Da: *Five Points* (World Premiere)



ROBERT GARDNER

Karl Lindner

Park Square A Raisin in the Sun, The Language Archive, To Kill a Mockingbird, The Odyssey, Melville Slept Here,

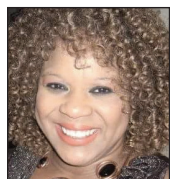
Dancing at Lughnasa Representative Theatre Walking Shadow Theatre Company: *Mary Stuart*; Bloomington Civic Theatre: *On Golden Pond*; Minnesota Shakespeare Project: *King Lear*; Iowa Theatre Artists Company: *A Walk*



LORRAINE VIVIAN HANSBERRY, American playwright, was born in 1930. Hansberry was the first black female author to have a play performed on Broadway. Her best-known play is *A Raisin in the Sun*. The title of the play was taken from the poem "Harlem" by Langston Hughes: "What happens to a dream deferred? Does it dry up like a raisin in the sun?" At the young age of 29, she won the New York's Drama Critic's Circle Award – making her the first African American dramatist, the fifth woman, and the youngest playwright to do so. Much of her work concerned the African struggle for liberation and its impact on the world. Hansberry wrote two screenplays of *Raisin*, both of which were rejected as controversial by Columbia Pictures. Commissioned by NBC in 1960 to create a television program about slavery, Hansberry wrote *The Drinking Gourd*. This script was called "superb" but also rejected. Hansberry has been identified as a lesbian, and sexual freedom is an important topic in several of her works. She died of cancer at the age of 34. Hansberry inspired Nina Simone's song "To Be Young, Gifted and Black."

CAST

in the Woods; Hardcover Theatre: *London After Midnight*; Illusion Theatre: *The Short-Wave Man* **TV/Film** *Our Father Taught Us*; *Mister X*; *Abandon Me*; *Asian Persuasion*, *The Morning Light*; *The Sandman*; *Voices on the River* **Training** A.B., English/Theatre, Oberlin College; M.A., Dramatic Art, University of California, Berkeley; Ph.D., Dramatic Art, University of California, Berkeley **Accolades/Other** Best Supporting Actor, *Lavender Magazine*, 2008; Professor of Theatre, Gustavus Adolphus College, 1971-2007

**CYNTHIA JONES-TAYLOR***

Lena Younger

Park Square *Dot*

Representative Theatre *5th*

Avenue Theatre: Hairspray, Cinderella, Carousel; National

and Canadian tours of *Menopause The Musical*; National tour of *The Miracle Worker*; Seattle Repertory Theatre: *Doubt, Ma Rainey's Black Bottom, The Time of Your Life, Play On!, Seven Guitars, New Patagonia*; Group Theatre: *A...My Name is Alice*; ACT Theatre (Seattle): *Waiting to be Invited, Omnium Gatherum, Blues for an Alabama Sky*; Intiman Theatre (Seattle): *Nickel and Dime, Black Nativity, A Raisin in the Sun, Crumbs from the Table of Joy* **TV/Film/Radio** *Spree*; *Gory, Gory Hallelujah*; numerous

radio and TV commercials; numerous voice over and video game productions **Accolades** Arizona Theater Alliance: Arizoni Award for Best Supporting Actress in a Musical (*Play On!* at Arizona Theatre Company); Chicago Theater Alliance: nominated for Best Supporting Actress in a Musical (*Play On!* at Goodman Theater) **Upcoming Projects** Guthrie Theater: *Guess Who's Coming to Dinner*

**DARRICK MOSLEY***

Joseph Asagai

Park Square *Debut*

Representative Theatre

History Theatre: *All the Way*;

Penumbra Theatre: *Jitney*;

Guthrie Theater: *Choir Boy*; *Mixed Blood Theatre: Colossal*; Penumbra Theatre: *The Ballad of Emmett Till*; Freshwater Theatre: *The Beacon from Belle Isle* **Training** B.A., Speech and Theatre, Grambling State University

**IMANI VAUGHN-JONES**

Beneatha Younger

Park Square *Hamlet*

Representative Theatre

Doghhouse Ensemble

Theater: *Hopscotch*;

Théâtre du Monde: *I Call My Brothers*; The Rose Theater: *Animal Farm, A Wrinkle in*

Time, The Colored Museum, The Brave Little Tailor, Hopeless Dreamer **Training** University of Minnesota/Guthrie Theater B.F.A. Actor Training Program **Upcoming Projects** Underdog Theater: *Luna Gale*



DEREK "DUCK" WASHINGTON

Bobo

Park Square Acting Debut; As Audio Designer: *Romeo and*

Juliet **Representative Theatre** Walking Shadow Theatre Company: *Marie Antoinette*; Comedy Suitcase: *The Averagers*; *Christmas War*; Fearless Comedy Productions: *Caucasian-Aggressive Pandas and Other Mulatto Tales*; Freshwater Theatre: *If You Don't Weaken*; Chameleon Theatre Circle: *Brilliant Traces*; Theatre in the Round: *Treasure Island* **TV/Film** **Thaco Training** B.A., Theatre Arts, University of Minnesota **Accolades/Other** Best Actor in a Play, BroadwayWorld Minneapolis, 2016 (for *Caucasian-Aggressive Pandas and Other Mulatto Tales*) **Upcoming Projects** Bloomington Center for the Arts: *Caucasian-Aggressive Pandas and Other Mulatto Tales* (June 2018); Mixed Blood Theatre: *Blackout Improv* the third Monday of every month



CALVIN ZIMMERMAN

Travis Younger

Park Square Debut **Representative Theatre** Children's Theatre Company: *How the*

Grinch Stole Christmas; Stages Theatre Company: *Twinkle, Twinkle*



"Members of Actors' Equity Association, the Union of Professional Actors and Stage Managers in the United States. Actors' Equity Association (AEA) was founded in 1913 as the first of the American actor unions. Equity's mission is to advance, promote and foster the art of live theatre as an essential component of our society. Today, Equity represents more than 40,000 actors, singers, dancers and stage managers working in hundreds of theatres across the United States. Equity members are dedicated to working in the theatre as a profession, upholding the highest artistic standards. Equity negotiates wages and working conditions and provides a wide range of benefits including health and pension plans for its members. Through its agreement with Equity, this theatre has committed to the fair treatment of the actors and stage managers employed in this production. AEA is a member of the AFL-CIO and is affiliated with FIA, an international organization of performing arts unions. For information, visit www.actorsequity.org."



WARREN C. BOWLES

Director

Park Square *My Children! My Africa!*, *Visiting Mr. Green*, *Constant Star*, *Of Mice and Men*, *I Have*

Before Me a Remarkable Document Given To Me By a Young Lady From Rwanda, *Trying* **Representative Theatre** More than 40 years of professional experience acting and directing at Mixed Blood Theatre, Guthrie Theater, Ten Thousand Things, American Players Theatre, A Contemporary Theatre, San Diego Public Theatre, Colorado Shakespeare Festival and other theaters across the country **Training** B.A., University of Notre Dame/L'Université Catholique de l'Ouest, Angers, France; M.A., University of Minnesota Twin Cities **Awards/Other** 2016 Ivey Award for Direction; Recipient of a 2005 McKnight Fellowship for Theater Artists and in 2004 Mayor R. T. Rybak proclaimed January 18 "Warren Caesar Bowles Day" in Minneapolis. Warren is a proud member of Actors' Equity Association.

LANCE BROCKMAN

Scenic Designer **Park Square** *The (curious case of the) Watson Intelligence*, *A Raisin in the Sun*, *Nina Simone: Four Women*, *My Children! My Africa!*, *Sherlock Holmes and the Ice Palace Murders*, *Red* **Representative Theatre** Penumbra Theatre: numerous productions including *By the Way*, *Meet Vera Stark*; *Black Nativity*; Minnesota Centennial Showboat: numerous productions **Training** B.A./M.S., Kansas State Teachers College **Other** Twin City Scenic Collection, 1987, and Theatre of the Fraternity, 1996 (exhibits of historic scenic art sketches)

A. EMILY HEANEY

Costume Designer **Park Square** *A Raisin in the Sun*, *The Language Archive*, *The Red Box*, *Stick Fly*, *Laughter on the 23rd Floor*, *American Family*, *Words By*, *Jekyll and Hyde* **Representative Theatre** Shakespeare & Company: *The Learned Ladies*; Lakeshore Players: *Young Frankenstein*; Loudmouth Collective: *The Best Brothers*; Fortune's Fool: *Why We Laugh*; Gremlin Theatre: *Outside Paducah*; Theater Coup d'Etat: *The Crucible*; Lakeshore Players: *The Happy Elf*

MICHAEL P. KITTEL Lighting Designer
Park Square Over 150 productions (as Resident Lighting Designer) including *The Color Purple*, *Red, Ragtime*, *Grey Gardens*, *Democracy*, *To Kill a Mockingbird*, *Rock 'n' Roll* **Representative Theatre** Ordway, Frank Theatre, Stages Theatre Company, Steppingstone Theatre, Mu Performing Arts, Bloomington Civic Theatre
TV/Film tpt: The St. Olaf Christmas Festival
Training University of Wisconsin-River Falls
Accolades Ivey Award for *The Pillowman* (Frank Theatre); *Lavender Magazine* Best Lighting Design 2008 & 2009

THEO LANGASON Assistant Director
Park Square As Actor: *Hamlet*, *A Raisin in the Sun*, *The Snow Queen* **Representative Theatre** Sandbox Theatre: *Queens* (at Park Square Theatre), *The Little Pilot* (Director), *Killer Inside*, *This Is a World to Live in*; 7th House Theater: *Hair*; Frank Theatre: *Citizen* **Training** B.A., Theatre Arts, Rutgers University–Camden
Upcoming Projects Park Square: *Ken Ludwig's Baskerville: A Sherlock Holmes Mystery* (Director)

EMILY MADIGAN Choreographer
Park Square *A Raisin in the Sun* **Representative Theatre** Sandbox Theatre: *Queens* (at Park Square); Ordway: *West Side Story*, *In the Heights*; Theater Latté Da: *Cabaret*; Artistry: *Hairspray*; Chanhassen Dinner Theatres: *The Little Mermaid*, *Bye Bye Birdie*, *Hairspray* **Awards** Rathaus Productions: *Cabaret* (Choreographer, and featured Dancer), Minneapolis Musical Theatre: *Leap of Faith* (Choreographer)

EVAN MIDDLESWORTH Sound Designer
Park Square *Macbeth*; *A Raisin in the Sun*; *Elliot, A Soldier's Fugue*; *Sherlock Holmes and the Ice Palace Murders*; *Cyrano*; *Words By; Of Mice and Men*; *Good People*; *King Lear*; *August: Osage County*; *The Last Seder* **Representative Theatre** Gulfshore Playhouse: *Constellations*; Aurora University: *Our Town*; ArtsWest Theatre: *History Boys*; Seattle Public Theatre: *I Hate Hamlet*; Second Story Repertory: *Anything Goes*; Purdue University: *Big Love* **Training** B.A., Sound Design, Purdue University **Other** Owner, Pine Hollow Audio, Eau Claire, WI (Audio Production, Sound Design, Composition)

ROBERT "BOBBIE" SMITH Properties Master
Park Square *Might as Well Be Dead*, *Amy's View* **Representative Theatre** Theater in the Round: *Rhinoceros*, *And Then There Were None*, *Deathtrap*, *Death on the Nile*; Minnesota Jewish Theatre Company: *Church and State*, *Hershel and the Hanukkah Goblins*, *Collected Stories*, *The Magic Dreidels*, *Aunt Raini*, *The Chanukah Guest*, *The Tale of the Allergist's Wife*, *Jericho*; Walking Shadow Theatre Company: *The River*

LAURA TOPHAM* Stage Manager
Park Square *Hamlet*, *Might as Well Be Dead*, *The Realistic Joneses*, *Calendar Girls*, *Jacob Marley's Christmas Carol*, *A Midsummer Night's Dream*, *Sherlock Holmes and the Ice Palace Murders*, *The Diary of Anne Frank*, *33 Variations*, *The Red Box*, *Of Mice and Men*, *Mary T. & Lizzie K.* **Representative Theatre** Ordway: *Flint Hills Children's Festival*; Theater Latté Da: *Beautiful Thing* **Training** B.A., Theatre Arts, University of Minnesota

SADIE WARD Properties Designer
Park Square *The (curious case of the) Watson Intelligence*; *Macbeth*; *Raisin in the Sun*; *Nina Simone: Four Women*; *Murder for Two*; *The Other Place*; *2 Sugars*, *Room for Cream*; *33 Variations*; *Behind the Eye*; *Of Mice and Men* **Representative Theatre** Theater in the Round, The Phipps Center for the Arts, Lyric Arts, Theatre Unbound, Theatre Pro Rata **Training** B.A., Theatre Studies; B.F.A., Arts Administration **Other** Human Resources Generalist at the Guthrie

Production Staff & Crew

Sound Operator: Nathaniel Glewwe
 Dresser/Wardrobe: Becca Chapin
 Production Director: Rob Jensen
 Technical Director: Ian Stoutenburgh
 Master Carpenter: William Bankhead
 Carpenters: Brittany Pooladian, Maya Simon, Meagan Kedrowski
 Master Electrician: Brent Anderson
 Electrician: Sam Golden
 Paint Charge: Angelique Powers, Mary Montgomery-Jensen
 Wardrobe Supervisor: Aaron Chvatal
 Sound Supervisor: Charlotte Deranek

Compose yourself your way.

However your day unfolds, let Classical MPR meet you where you are.

Tune in or stream at classicalmpr.org.



99.5
classicalMPR



AARP members and those 62+ enjoy complimentary coffee and cookies before Park Square matinees courtesy of:

AARP Real Possibilities in the
Twin Cities

PARK SQUARE THEATRE INFORMATION

CONTACT

Mailing Address:

408 St. Peter Street, Suite 110
Saint Paul, MN 55102

Street Address:

20 West 7th Place, Saint Paul, MN 55102

Ticket Office: 651.291.7005

Education: 651.291.9196

Donor Development: 651.767.1440

Audience Services: 651.767.8489

Group Sales: 651.767.8485

Please visit parksquaretheatre.org to view the following listings: Staff, Board of Directors, Educator Advisory Board, Individual and Corporate Giving.



TICKET OFFICE HOURS

Tuesday – Saturday*

12:00-5:00pm

**Open Saturdays on performance days only*

Performance Days*

6:30-8:30pm for 7:30 evening performances

1:00-3:00pm for 2:00 matinee performances

**Hold times may be longer due to in-person customer service before performances*

Proscenium Stage seats 348. Andy Boss Thrust Stage seats 203.

The Historic Hamm Building is a smoke-free facility.

Latecomers are seated at the discretion of the House Manager.

Restrooms and water fountains are on main floor and lower level.

Cameras/audio/video equipment and laser pointers are prohibited.



These activities are made possible by the voters of Minnesota through a Minnesota State Arts Board Operating Support grant, thanks to a legislative appropriation from the arts and cultural heritage fund, and a grant from the Wells Fargo Foundation Minnesota.



651.291.7005 / parksquaretheatre.org theatre for you. (yes you.)™