



# SOMETIMES THERE'S WINE

Created, Written  
and Performed  
by SHANAN CUSTER  
and CAROLYN POOL

Directed by  
ANGELA TIMBERMAN

**SEPT 14 – OCT 14**  
Andy Boss Thrust Stage

# THE AGITATORS

*The Story of Susan B. Anthony and Frederick Douglass*

By MAT SMART

Directed by  
SIGNE V. HARRIDAY

**SEPT 21 – OCT 28**

Proscenium Stage

*Student Matinees Oct 16, 17, 23, 24*



**PARK SQUARE**  
THEATRE

WELCOME TO YOUR  
**2018-2019 SEASON**

*Innovative, thought-provoking,  
surprising and timely.*

# Compose yourself your way.

However your day unfolds,  
let Classical MPR meet you  
where you are.

**Tune in or stream  
at [classicalmpr.org](http://classicalmpr.org).**



**99.5**  
classicalMPR



## TRIPLE ESPRESSO®

a highly caffeinated comedy



**Nov 9, 2018 – Jan 13, 2019**

Andy Boss Thrust Stage

***Family-friendly fun!***



**PARK SQUARE**  
THEATRE

## Dear Park Square Patron:

Welcome to the opening productions of Park Square Theatre's 44th season in downtown Saint Paul! These two shows are filled with heart, humor, and deep humanity. Proudly for us, they are also showcases for exceptional Twin Cities' talent.

Kicking off our season in the Boss, Shanan Custer and Carolyn Pool have created the hilarious and poignant *Sometimes There's Wine* from scratch and from their hearts. We are overjoyed to have their unique voices at Park Square. Enjoy your night with these powerful and funny women – who dare to say what so many of you are thinking!

*The Agitators* premiered 10 months ago in Rochester, NY, but writer Mat Smart has a Minnesota artistic home at the Playwrights' Center. When we spoke to him about producing the country's second production of his play, we immediately agreed on Signe Harriday to direct. Her love for the contemporary energy of this story brings you to the very cradle of the civil and women's rights movements; reminding us that the teaching and leadership of Susan B. Anthony and Frederick Douglass are essential for us today.

As you leave these plays – hopefully with high energy and hopefulness – stop in the lobby to pick up forms to register or to vote early by mail. You can't help but leave ready to make a difference after the stirring words of Susan B. Anthony, Fredrick Douglass and our very own "2 Sugars." **Your energy and passion do so much to advance our work towards equity, inclusion and education for Twin Cities' youth. We can only imagine the difference you make outside our walls!**

Thank you, truly, for building this theatre with love for 44 years. Here's to a whole theatre season of heart and humanity!



Flordelino Lagundino  
John W. Harris Family Artistic Director  
651.767.8482 lagundino@parksquaretheatre.org



C. Michael-jon Pease, CFRE  
Executive Director  
651.767.8497 pease@parksquaretheatre.org



Park Square Theatre seeks to enrich you – and our community – by producing and presenting exceptional live theatre that touches the heart, engages the mind, and delights the spirit.

# SYNOPSIS

For centuries, wine has been the nectar of the gods, the inspiration of storytellers and the thing that makes the holidays a bit more festive. In this second installment of the 2 Sugars Show, our writers take us to places where wine is served, and stories are told: weddings, book clubs, the occasional happy hour and, of course, the obligatory family gathering. No matter how bad things get, there's always coffee. **Sometimes There's even Wine.** And when there's both, well that's a good day.



## ABOUT THE PLAYWRIGHTS



Shanan and Carolyn met in 2008, liked each other a great deal, had some coffee, and decided to write a show about “scenes from life, stuff we think is funny.” *2 Sugars, Room for Cream* won an Ivey Award in 2013 for “Best Ensemble” and had a run at Park Square’s newly-opened Andy Boss Thrust Stage in 2015. *Sometimes There’s Wine* (Twin Cities Arts Reader Best of the 2016 MN Fringe Festival) is the 2018-19 Park Square Theatre season opener, but you already know that. And coming soon: *Bad Things, Good Whiskey*. Join us for a drink! Seriously. We’ll be at Meritage in 20 minutes.



This production is dedicated with love and wine (and ok, some whiskey too) to Kris Wilke Detailleur, who was our original Stage Manager when we first produced *2 Sugars, Room for Cream*. Her grace, grit and expertise helped us create that first show and has inspired all of our creations since. Here’s a toast to you, Kris. Love.

## SPECIAL THANKS

Paul and Pat Sackett  
Buffy Blesi  
TedxMinneapolis  
DalekoArts  
Carol Ott  
MN Fringe Festival  
Robin Gillette  
Ben McGinley  
Matthew Anderson  
Planned Parenthood, MN  
Matt Sciple

Carl Lee  
David Mehrer  
Morgan Levandowska  
Anya Kremenetsky  
Peter Moore  
Drew Jansen  
John Morson  
Illusion Theatre’s *Fresh Ink*  
All of our friends for saving  
wine boxes and bottles (and  
sharing the wine)  
The Saint Paul Hotel

Park Square Theatre, in collaboration with 2 Sugars Show, presents

# SOMETIMES THERE'S WINE



Created, Written and Performed  
by SHANAN CUSTER and CAROLYN POOL

## ARTISTIC STAFF

Director..... Angela Timberman  
Scenic Designer..... Sadie Ward  
Lighting Designer..... Michael P. Kittel  
Sound Designer..... Eric Webster  
Stage Manager ..... Megan Fae Dougherty\*  
Assistant Stage Manager ..... Kyla Moloney

## CAST

Shanan Custer  
Carolyn Pool\*

## PERFORMANCE TIME

The show will run approximately 2 hours with one 20-minute intermission.

.....

*Sometimes There's Wine* is presented by special arrangement with Carolyn Pool and Shanan Custer.  
Logo/Art by Wendy Ruyle; Photography by Richard Fleischman.

.....

The videotaping or making of electronic or other audio and/or visual recordings of this production or distributing recordings on any medium, including the internet, is strictly prohibited, a violation of the author's rights and actionable under United States copyright law.

As a courtesy to our actors and those around you, please  
**DEACTIVATE** all PHONES and ELECTRONIC DEVICES.

\*Member of Actors' Equity Association, the Union of Professional Actors and Stage Managers in the United States  
Park Square Theatre is a member of Theatre Communications Group (TCG), the national organization for the American theatre.



# Intermission wine & snack pairings!



While there are many refreshing options at the Boss Stage Concessions, the nature of this show *demand*ed we do a tasting and pair the perfect intermission snacks with these fine wine options. Carolyn, Shanan and Jiffy tell you all you need to know about what goes with what. *Enjoy!*

## **La Playa Sauvignon Blanc**

This yum, yum, yummy white comes with traditional notes of dried apricot, preserved lemon and pineapple.

**Pairs well with:** Ginger Cookie, Honey Roasted Peanuts, and Snickers

*"It tastes kind of like how my Grandma's house smells."* –Jiffy

.....

## **Riff Pinot Grigio**

One of the leading winemaking families in Italy, these folks do not mess around! Get refreshed with river rock minerality and light grapefruit with just a hint of char.

**Pairs well with:** Oatmeal Raisin Cookie, Gardetto's Snack Mix, Twix

*"I didn't like it at first, but now it's ok."* –Shanan

.....

## **Blu Prosecco**

The "pop" of a cork on a sparkling wine is the happiest sound in the world, and this go-to sparkler never disappoints. An extremely floral nose and bright crisp notes of citrus on the palate.

**Pairs well with:** Snickerdoodle Cookie, Salted Cashews, Kit Kat Bar

*"This is perfect for a bunch of hung-over bridesmaids at brunch."* –Carolyn

## **Ironstone Pinot Noir**

From one of the most gorgeous wineries in California, this uber-lush and velvety Pinot Noir gives us gorgeous notes of dried plum, clove and vanilla.

**Pairs well with:** Chocolate Chip Cookie, Salted Peanuts, Whatchamacallit

*"This is the wine you drink when you're about to do something awesome that will also probably disappoint your family."* –Carolyn

.....

## **Black's Station Cabernet Sauvignon**

This is Jiffy's most loved wine and she didn't have to convince us that this is a sexy, SEXY sip. Dark cherries and raspberry preserves, this bold and spicy wine is a cast and staff favorite.

**Pairs well with:** Double Chocolate Cookie, Twizzlers, A second glass of Black's Station Cab

*"Have you ever seen Tom Jones circa 1968? That's this wine."* –Carolyn

.....

## **Signature Cocktail! "The Reckoning"**

A sophisticated blend of bourbon and Cabernet Sauvignon, with just a splash of sparkle and sweet, this is a drink that's a holiday in a glass. With Dean Martin playing in the background, gift wrapping all over the floor, happy family time, and lounging in pajamas all day long.

*"That's Merry Holidays good."* –Shanan



## **SHANAN CUSTER**

Writer/Actor

**Park Square** *Romeo and Juliet; The Liar; Calendar Girls; 2 Sugars, Room*

*for Cream; Dead Man's Cell Phone*

**Representative Theatre** Interact Theater:

*Hell is Empty and ALL the Devils are Here;*

Casting Spells Productions: *Frankie and*

*Johnny in the Clair de Lune;* Workhaus

Collective: *The Mill;* Theatre Pro Rata:

*Up: The Man in the Flying Chair* (at Park

Square); Emilie: *Le Marquis du Châtelet*

*Defends Her Life Tonight* **Training** M.A.,

Theater History, Theory and Criticism,

University of Maryland, College Park

**Accolades** Ivey Award winner 2013

(Ensemble, *2 Sugars, Room for Cream*);

Twin Cities Theater Bloggers 2016

Favorite Comedic Performance for

*Calendar Girls, The Liar* and *Sometimes*

*There's Wine* **Upcoming Projects** Mick

Sterling Presents *At Christmas; Bad*

*Things, Good Whiskey; World Domination*



## **CAROLYN POOL\***

Writer/Actor

**Park Square** *Henry and Alice: Into the Wild; Calendar Girls; 2 Sugars, Room for*

*Cream; August: Osage County; Dead Man's*

*Cell Phone; The Sisters Rosensweig; Proof;*

*The Last Night of Ballyhoo; Born Yesterday*

**Representative Theatre** Hippodrome

Theatre: *Women in Jeopardy; Old Log*

Theater: *Almost, Maine;* Illusion Theater:

*Miranda, Three Viewings;* Gremlin

Theatre: *Orson's Shadow;* Jungle Theater:

*Honour* **Training** B.A., Augsburg College

**Accolades/Other Artist/Mentor** for The

Chicago Avenue Project; Penumbra

Theatre RACE workshop, Ivey Award

winner 2008 (Ensemble, *Orson's Shadow*)

and 2013 (Ensemble, *2 Sugars, Room*

*for Cream*); Best Actress 2011 SoCal

Film Festival (*Rotations of the Earth*)

**Upcoming Projects** *Bad Things, Good*

*Whiskey; World Domination*

## **ARTISTIC STAFF**



## **ANGELA TIMBERMAN**

Director

**Park Square** (as Director) Debut; (as Actor) *The Sisters*

*Rosensweig, Painting Churches, Good*

*People, Sons of the Prophet, The Realistic*

*Joneses* **Representative Theatre** (as

Director) Artistry: *Talley's Folly, The Music*

*Man, Legally Blonde;* Lyric Arts: *Steel*

*Magnolias;* (as Actor) Guthrie Theater,

Children's Theatre Company, Jungle

Theater, History Theatre, Chanhassen

Dinner Theatres, Workhaus Collective,

Illusion Theatre, Artistry **Upcoming**

**Projects** (as Director) Yellow Tree

Theatre: *Cry It Out;* (as Actor) Jungle

Theater: *The Wickhams: Christmas at*

*Pemberley;* Guthrie Theater: *As You Like It*

## **MEGAN FAE DOUGHERTY\***

Stage Manager

**Park Square** Multiple shows since

2011 including: *Dot, Macbeth, Great*

*Expectations, My Children! My Africa!, The*

*Other Place, The Color Purple, Cyrano,*

*Good People* **Representative Theatre** Great

River Shakespeare Festival: Summer

2017; TigerLion Arts: *Nature, The Dragons*

*Are Singing Tonight*; Troupe America: *A Christmas Carol*; Utah Shakespeare Festival: 2007 Season; Santa Fe Opera: 2006 Season **Training** B.A., Theatre Administration, Bemidji State University

## MICHAEL P. KITTEL

Lighting Designer

**Park Square** Over 150 productions (as Resident Lighting Designer) including *The Color Purple*, *Red*, *Ragtime*, *Grey Gardens*, *Democracy*, *To Kill a Mockingbird*, *Rock 'n' Roll* **Representative Theatre** Ordway, Frank Theatre, Stages Theatre Company, Steppingstone Theatre, Mu Performing Arts, Bloomington Civic Theatre **TV/Film** TPT: The St. Olaf

Christmas Festival **Training** University of Wisconsin-River Falls **Accolades** Ivey Award for *The Pillowman* (Frank Theatre); *Lavender Magazine* Best Lighting Design 2008 & 2009

## SADIE WARD

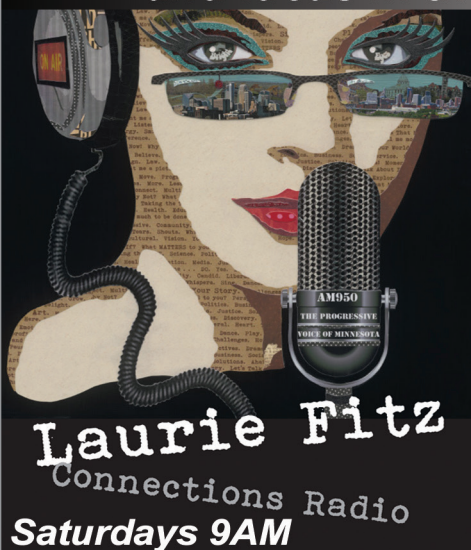
Scenic Designer

**Park Square** *A Raisin in the Sun*; *Nina Simone: Four Women*; *Murder for Two*; *The Other Place*; *2 Sugars*, *Room for Cream*; *33 Variations*; *Behind the Eye*; *Of Mice and Men* **Representative Theatre** Theatre in the Round, The Phipps Center for the Arts, Lyric Arts, Theatre Unbound, Theatre Pro Rata **Training** B.A., Theatre Studies; B.F.A., Arts Administration **Other** Human Resources Generalist at the Guthrie



\*Members of Actors' Equity Association, the Union of Professional Actors and Stage Managers in the United States. Actors' Equity Association (AEA) was founded in 1913 as the first of the American actor unions. Equity's mission is to advance, promote and foster the art of live theatre as an essential component of our society. Today, Equity represents more than 40,000 actors, singers, dancers and stage managers working in hundreds of theatres across the United States. Equity members are dedicated to working in the theatre as a profession, upholding the highest artistic standards. Equity negotiates wages and working conditions and provides a wide range of benefits including health and pension plans for its members. Through its agreement with Equity, this theatre has committed to the fair treatment of the actors and stage managers employed in this production. AEA is a member of the AFL-CIO and is affiliated with FIA, an international organization of performing arts unions. For information, visit [www.actorsequity.org](http://www.actorsequity.org).

## Your source for progressive news and ideas in the Twin Cities



# AM 950

[AM950radio.com](http://AM950radio.com)

PROUD Supporter of **Performing Arts**



**ERIC WEBSTER**

Sound Designer

**Park Square** (as Sound Designer) *2 Sugars*, *Room for Cream*; (as Actor) *Laughter on the 23rd Floor*, *King Lear* **Representative Theatre** (as Actor) Guthrie Theater: *Heaven*; Pioneer Place: *A Streetcar Named Desire*; Bloomington Civic Theatre: *City of Angels*; Bloomington Civic Theatre: *The 39 Steps*; Workhaus Collective: *The Mill*; Ghoulis Delights: *The Mysterious Old Radio Listening Society*, *Screaming Skull*; Comedy Suitcase: *The Averagers* **TV Host: Big Events** (DIRECTV); **Host: Big Bad Movie** (KSTC) **Accolades** 2010 *Lavender Magazine* Best Actor in a Musical: *City of Angels*; Emmy Award Nomination: *Big Bad Movie* **Upcoming Projects** (as Actor) **Park Square: Heaven** (Summer 2019); **James Hill Center: Mysterious Old Radio Listening Society** (Fall 2018); more at [ericdwebster.com](http://ericdwebster.com)

**Production Staff & Crew**

Assistant Master Electrician:

Brent Anderson

Electrician: Jeremy Ellarby

Lighting Programmer: Kyia Britts

Master Carpenter: William Bankhead

Carpenters: Madi Smith, Brittany

Pooladian, Maya Simon, Nick

Krekeler, Jorge Rodriguez, Kyia Britts,

Ethan Jensen, Becky Provost, Rosie

Westphal, Meagan (MJ) Kedrowski

Scenic Charge:

Mary Montgomery-Jensen

Painters: Nicole DelPizzo, Jeni Tolifson

Sound Board Operator:

Samantha Faye King

**MARIE and ROSETTA**

Roof-raising gospel,  
rhythm and blues.

**PARK SQUARE**  
THEATRE

**Nov 23 - Dec 30, 2018**  
Proscenium Stage

By George Brant  
Directed by Wendy Knox  
Play with Music

# SYNOPSIS

***The Agitators*** tells of the enduring but tempestuous friendship of **Susan B. Anthony and Frederick Douglass**. Great allies? Yes. And at times, great adversaries. Young abolitionists when they met in Rochester in the 1840s, they were full of hopes, dreams and a common purpose. As they grew to become the cultural icons we know today, their movements collided, and their friendship was severely tested. This is the story of that 45-year friendship – from its beginning in Rochester, through a Civil War and to the highest halls of government. They agitated the nation, they agitated each other and, in doing so, they helped shape the Constitution and the course of American history.

..... ★ ★ ★ .....

*This show was made possible in part by Park Square Theatre's*

## **FUTURE AUDIENCES CLUB:**

Marcia J. Aubineau

Lynne Beck

David & Genevieve Freier

John W. Harris

Walter McCarthy & Clara Ueland

Benedict & Rita Olk

Sarah Stevenson

in memory of Gary Berggren

Irene Suddard

Helen Wagner

John & Sandra White

**The Future Audiences Club** subsidizes performances for students from literary classics to new work rich in social and educational content. Learn about joining this group, the Mystery Writers Producers' Club (*Agatha Christie – Rule of Thumb*) or the Premiere Club (*Marie and Rosetta*) by contacting Mackenzie Romanesko:

**651.767.1440 / [romenesko@parksquaretheatre.org](mailto:romenesko@parksquaretheatre.org)**

*Special support for student matinees comes from*

**The Joseph and Elizabeth Anderlik Charitable Trust**

..... ★ ★ ★ .....

The videotaping or making of electronic or other audio and/or visual recordings of this production or distributing recordings on any medium, including the internet, is strictly prohibited, a violation of the author's rights and actionable under United States copyright law.

As a courtesy to our actors and those around you, please  
**DEACTIVATE all PHONES and ELECTRONIC DEVICES.**

\*Member of Actors' Equity Association, the Union of Professional Actors and Stage Managers in the United States

Park Square Theatre is a member of Theatre Communications Group (TCG), the national organization for the American theatre.

# THE AGITATORS

*The Story of Susan B. Anthony and Frederick Douglass*

By MAT SMART

## ARTISTIC STAFF

Director .....	Signe V. Harriday
Scenic Designer .....	Sarah Brandner
Costume Designer .....	Aaron Chvatal
Wig Designer .....	Robert A. Dunn
Lighting Designer .....	Michael P. Kittel
Properties Designer .....	Abbee Warmboe
Video Designer .....	Bill Cottman
Sound Designer .....	Christy Johnson
Dramaturg .....	Peter Rachleff
Assistant Dramaturg .....	Nyomee Fevrier
Stage Manager .....	Lyndsey R. Harter*
Assistant Stage Manager .....	Haley Walsh

## CAST

Frederick Douglass .....	Mikell Sapp*
Susan B. Anthony .....	Emily Gunyou Halaas*

## LOCATIONS

Rochester, NY; Albany, NY; Boston, MA; New York City and Washington D.C.

## TIME PERIODS

Act I 1849 to 1869; Act II 1870 to 1895

## PERFORMANCE TIME

The show will run approximately 2 hours, 20 minutes  
plus one 15-minute intermission.

.....

*The Agitators* is produced by special arrangement with  
The GERSH AGENCY, 41 Madison Avenue, 33rd Floor, New York, NY 10010  
Originally Commissioned and produced by Geva Theatre Center, Rochester, NY  
Mark Cuddy, Artistic Director; Christopher Mannelli, Executive Director  
*The Agitators* was further developed as part of The New Harmony Project 2017 Conference

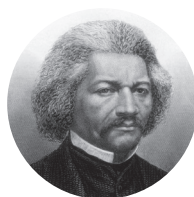


Mat Smart is thrilled to make his Park Square debut with *The Agitators*. As the recipient of two Jerome Fellowships and a McKnight Advancement Grant from the Playwrights' Center, Mat lived in the Twin Cities from 2008 to 2011. Recent world premieres include *Kill Local* at the La Jolla Playhouse (nominated for Outstanding New Play by the San Diego Theatre Critics Circle) and *The Agitators* at Geva Theatre Center in Rochester, NY. In addition to Park Square's production of *The Agitators*, it is simultaneously being produced at Gloucester Stage Company near Boston and Mosaic Theatre in Washington, D.C. Mat is currently under commission by The Second City and the La Jolla Playhouse to write *The Elephants*, a comedy about white privilege. Other plays include: *The Royal Society of Antarctica* (Gift Theatre, recipient of the 2015 Jeff Award for Best New Work in Chicago), *Samuel J. and K.* (Williamstown Theatre Festival; Steppenwolf; Passage Theatre), *The Hopper Collection* (Magic Theatre; Huntington), and *Tinker to Evers to Chance* (Geva; Merrimack Rep; and upcoming in the Twin Cities at Artistry in Spring 2019, directed by Brian Balcom).

## CATALYSTS FOR CHANGE



Susan B. Anthony



Frederick Douglass

While Susan B. Anthony and Frederick Douglass sought the abolition of slavery and believed in suffrage rights for all citizens, they often differed on which tactics to employ – should they use a more confrontational approach, as Anthony sometimes advocated? Or was a more diplomatic method, as Douglass would argue, the better tool?

Their points of view came into sharpest contrast over the passage of the Fifteenth Amendment. Douglass' beliefs were informed by his years as a slave, as well as the difficulties he encountered in the north as a free black man, while Anthony's argument grew from her experiences of receiving unequal treatment based on her gender. Their division hinged on the wording of the Amendment, as Douglass believed that they could not garner enough political support for both blacks and women to get the right to vote and,

therefore, black males should receive suffrage first, at which point they would then begin to tirelessly advocate for suffrage for women. This division would lead to lengthy periods of stress on their friendship. It would not, however, end the relationship. If anything, it seemingly strengthened it.

Following the passage of the Fifteenth Amendment, Douglass and Anthony continued their friendship. Anthony, despite her deep disappointment in its wording, was still heartened by the advances that had been made, stating that “the grandest work that a mortal can accomplish is to get talking, and thereby stir people up to do something. You don't think much of this talking; I tell you it makes everything in the world. First comes talk, then in due time will come action and revolution.”

*Excerpts reprinted with permission from Geva Theatre Center – Rochester, NY*

# A NOTE FROM THE DIRECTOR

My father was a history major in college and growing up I didn't understand why. It seemed to me there were much more interesting things to study in college. That is until I began to understand the power of **story**. My father, a preacher and a Black man born during the Jim Crow era, certainly understood the power and impact of story. As I navigate through this world as an artist, activist, agitator, and storyteller, I cannot stress enough the influence I believe stories have on us all. Stories provide a platform for context and connection. They frame our realities and ideas about ourselves and the world.

have agency in the present, or meaningful influence on the future. So this is why I believe we must delve into the past and ask questions about the framing of our stories. How can we explore the interconnectedness of historical figures to each other and to us?

Audre Lorde said, "Through examining the combination of our triumphs and errors, we can examine the dangers of an incomplete vision. Not to condemn that vision but to alter it, construct templates for possible futures, and focus our rage for change upon our enemies rather than upon each other."

***"As I navigate through this world as an artist, activist, agitator, and storyteller, I cannot stress enough the influence I believe stories have on us all."***

— Signe V. Harriday, Director

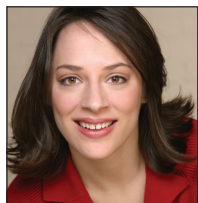


But what then when the stories you've been told about yourself, about your ancestors, about the land, about the world, about how we've come to be in the place and circumstances we are in, are at best partial-truths framed and told by an **author-itarian** who fails to see you as an equal human being? Whose story about themselves seeks to erase the genocide and dehumanization of people in exchange for the comforting genesis story of a nation: *the patriotic birth of the United States of America*.

The fragmented telling of our collective herstory/history makes it difficult to see ourselves in the past, which I believe is required if we (all of us) are going to

*The Agitators* is not a retelling of history, it is an opportunity to explore and feel the very humanity of these critical American figures. Their journey invites us to consider the moments in our lives when we have failed to stand up against the injustices perpetrated on our neighbors, on our fellow human beings. How can we fight for each other? How can we stay in the room with each other when we disagree, when we feel hurt and betrayed? How can we fight for each other's human dignity while not sacrificing our own? How can we fight for the right to vote when the very language of the law welcomes disenfranchisement? How can we be the **agitators** our world needs us to be?





**EMILY  
GUNYOU HALAAS\***

Susan B. Anthony  
**Park Square** *The  
Snow Queen, Cyrano,  
Or, Opus, Jekyll and*

*Hyde, Trying* **Representative Theatre**  
Guthrie Theater: *Sunday in the Park  
with George, Clybourne Park, Uncle  
Vanya, Sense and Sensibility, The Master  
Butchers Singing Club*; Hartford Stage:  
*Cloud 9*; Jungle Theater: *Le Switch,  
The Vibrator Play*; Theatre de la Jeune  
Lune/La Jolla Playhouse: *The Deception*;  
Theater Latté Da: *Passage of Dreams*  
**TV/Film** *Nobody Training* Circle in  
the Square Theater School, Funny  
School of Good Acting, École Philippe  
Gaulier **Accolades** 2009 Ivey Award for  
Emerging Artist, Ensemble of Actors  
(Guthrie Theater: *Clybourne Park*)  
**Upcoming Projects** Guthrie Theater: *A  
Christmas Carol*



**MIKELL SAPP\***

Frederick Douglass  
**Park Square** Debut  
**Representative  
Theatre** Pillsbury  
House Theatre: *The*

*Great Divide, Broke-Ology*; History  
Theatre: *A Crack in the Sky*; Ten  
Thousand Things: *Electra*; Children's  
Theatre Company: *The Snowy Day*;  
Mixed Blood Theatre: *Pussy Valley*;  
Guthrie Theater: *Marcus, or the Secret  
of Sweet*; Penumbra Theatre: *The  
Ballad of Emmett Till* **Training** B.F.A.,  
Theatre Arts, Alabama State University  
**Accolades** 2015 Ivey Award Winner for  
Emerging Artist



**SIGNE V. HARRIDAY**

Director  
**Park Square** *Cardboard  
Piano, The House  
on Mango Street*  
**Representative**

**Theatre** Workhaus Collective: *The  
Hollow*; Penumbra Theatre: *for colored  
girls who have considered suicide/when  
the rainbow is enuf*; Children's Theatre  
Company: *Mr. A's Amazing Maze  
Plays*; Mixed Blood Theatre: *My Secret  
Language of Wishes*; Frank Theatre:  
*Eclipsed*; Director at SteppingStone  
Theatre **TV/Film** Alt for Norge **Training**  
M.F.A., Institute for Advanced Theatre  
Training at the American Repertory  
Theatre at Harvard University and  
Moscow Art Theatre **Other** Co-Founder  
of MaMa mOsAiC Theater; Co-Founder  
of Million Artist Movement; Associate  
Company Member of Pillsbury House  
Theatre; more info at [signeharriday.com](http://signeharriday.com) **Upcoming Projects** History  
Theatre: *Neighbors*; Stages Theatre  
Company: *Hidden Heroes: The Black  
Black Women of NASA*

**SARAH BRANDNER**

Scenic Designer  
**Park Square** *Cardboard Piano, Murder  
for Two* **Representative Theatre** Theater  
Mu: *The Korean Drama Addict's  
Guide to Losing Your Virginity, The  
Two Kids That Blow S\*\*t Up*; Guthrie  
Theater: *Intersections, Concrete Orange:  
An American Fable*; Penumbra Theatre: *A  
Peculiar Patriot, Rodney King*; MN  
Opera: *Elixir of Love, The Odyssey*; Skylight  
Music Theatre: *Hot Mikado*; Stages  
Theatre Company: *Madagascar,  
Crenshaw*; Trademark Theatre: *The*

*Boy and Robin Hood*; Loudmouth Collective: *Testament of Mary*; Minnesota History Museum: *Penumbra at 40: Art, Race and a Nation on Stage* **Training** M.F.A., Scenic and Lighting Design, University of Minnesota **Upcoming Projects** Stages Theatre Company: *Mary Poppins Jr.*; Lyric Arts: *Sense and Sensibility*; Trademark Theatre: *Understood*

## AARON CHVATAL

Costume Designer

**Park Square** *Amy's View, Murder for Two, 4000 Miles* **Representative Theatre** Ordway: *Annie*; Penumbra Theatre: *Detroit '67*; History Theatre: *A Crack in the Sky*; Theater Mu: *The Two Kids That Blow S\*\*t Up, Purple Cloud*; Opera on the James: *Così fan Tutte, Don Giovanni, Don Pasquale, Gianni Schicchi, Hansel and Gretel*; Brevard Music Festival: *A Midsummer Night's Dream, Falling Angel, Street Scene, Don Pasquale*; Castleton Opera Festival: *Our Town*; Yellow Tree Theatre: *The Royale*; Lakeshore Players: *The Mystery of Edwin Drood* **Training** B.A., Theatre Arts, Hamline University; M.F.A., Costume Design and Technology, University of Missouri, Kansas City **Upcoming Projects** Park Square: *Marie and Rosetta*; Crane School of Music, SUNY Potsdam: *Mayo*, a world premiere

## BILL COTTMAN

Video Designer

**Park Square** Debut **Representative Theatre** Guthrie Theater Dowling Studio with The Iraqi and American Reconciliation Project: *Birds Sing Differently Here*; Dreamland Arts with The Iraqi and American Reconciliation Project: *Birds Sing Differently Here*;

Intermedia Arts with Frank Theatre: *Citizen*; Old Arizona Theater with The Ways Ensemble: *Surface Tensions*; The Avalon Theater with Pangea World Theater: *A Disease Called Freedom*; The Varsity Theater with Pangea World Theater: *Patriot Acts*; The Capri Theater with Pangea World Theater: *2704*; Southern Theater: *BLAQ PRESENCE* with Deja Stowers & The Movers of *BLAQ* **Training** B.S., Electrical Engineering, Howard University **Accolades** McKnight Fellowship in Photography

## ROBERT A. DUNN

Wig Designer

**Park Square** Debut **Representative Theatre** Children's Theatre Company (14 seasons); Ordway: *Mama Mia, West Side Story, Jesus Christ Superstar, White Christmas* (and others); History Theatre: *Glen Sheen, Baby Case* (and others); Walking Shadow Theatre Company: *Marie Antoinette, The Complete Female Stage Beauty, Gross Indecency*; Alley Theatre (2003-2004); Big League Theatricals; Alabama Shakespeare Festival (8 seasons); Black Hills Playhouse **Training** B.F.A., Costume Design, University of South Dakota; Associate Degree, Cosmetology, John M. Patterson State Technical College, Montgomery, Alabama

## LYNDSEY R. HARTER\*

Stage Manager

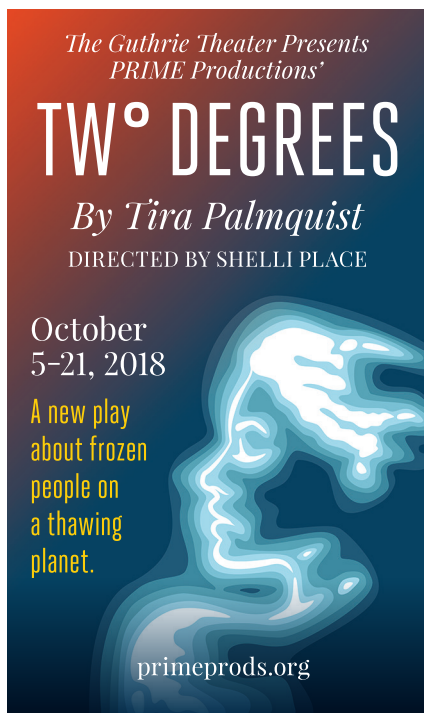
**Park Square** *The Diary of Anne Frank, Cardboard Piano, The House on Mango Street*; (as Assistant Stage Manager) *Flower Drum Song* (co-production with Mu Performing Arts), *Jacob Marley's Christmas Carol, My Children! My Africa!*,

*Murder for Two, The Other Place*; (as Run Crew/Wardrobe) *The Color Purple*  
**Representative Theatre** Theater Latté Da: *Man of La Mancha*; Theater Mu: *Charles Francis Chan Jr.'s Exotic Oriental Murder Mystery, The Korean Drama Addict's Guide to Losing Your Virginity*; Great River Shakespeare Festival: *As You Like It*; (as Assistant Stage Manager) MN Opera: *Fellow Travelers* **Training** B.A., Theatre Arts, Hamline University

## CHRISTY JOHNSON

Sound Designer

**Park Square Dot Representative Theatre** (as Sound Designer) Theatre in the Round: *The Prime of Miss Jean Brodie, The Drawer Boy*; (as Actor) Guthrie Theater: *Burial at Thebes*; Eat Street Players: *The Music Man*; Lakeshore Players: *Big*



*River, The Mystery of Edwin Drood*; Eden Prairie Players: *Seussical*; The Play's The Thing: *Jekyll and Hyde* **Training** B.A., Theatre Arts, Southwest Minnesota State University; M.B.A., University of St Thomas **Upcoming Projects** 20% Theatre: *Waafrica* 123

## MICHAEL P. KITTEL

Lighting Designer

**Park Square** Over 150 productions (as Resident Lighting Designer) including *The Color Purple, Red, Ragtime, Grey Gardens, Democracy, To Kill a Mockingbird, Rock 'n' Roll* **Representative Theatre** Ordway, Frank Theatre, Stages Theatre Company, Steppingstone Theatre, Mu Performing Arts, Bloomington Civic Theatre **TV/Film** TPT: The St. Olaf Christmas Festival **Training** University of Wisconsin-River Falls **Accolades** Ivey Award for *The Pillowman* (Frank Theatre); *Lavender Magazine* Best Lighting Design 2008 & 2009

## PETER RACHLEFF

Dramaturg

**Park Square Debut Representative Theatre** (as Dramaturg) Pittsburgh Public Theatre: *Things of Dry Hours*; Oregon Shakespeare Festival: *The Liquid Plain*; Frank Theatre: *The Cradle Will Rock*; (as Actor) Guthrie Theater: *Are You Now or Have You Ever Been?* **TV/Film** *Iron Range: Minnesota Building America* (TPT/PBS) **Training** Ph.D., History, University of Pittsburgh **Accolades** Lifetime Achievement Award in Labor History, Walter P. Reuther Archives, Detroit **Upcoming Projects** Continuing to build the East Side Freedom Library ([eastsidefreedomlibrary.org](http://eastsidefreedomlibrary.org))

## ABBEE WARMBOE

Properties Designer

**Park Square Flower Drum Song** (co-production with Mu Performing Arts), *The Realistic Joneses*, *The Liar*, *Calendar Girls*, *Great Expectations*, *The Language Archive*, *The Color Purple* **Representative Theatre** Theater Latté Da: *Once*, *Underneath the Lintel*, *Five Points*; Penumbra Theatre: *For Colored Girls*, *This Bitter Earth*; Ordway: *Mamma Mia!*, *Jesus Christ Superstar*; Guthrie Theater: *Guess Who's Coming to Dinner*; Ten Thousand Things: *Scapin*, *Park and Lake*; History Theatre: *Lord Gordon Gordon*; Theater Mu: *The Korean Drama Addict's Guide to Losing Your Virginity*, *Two Mile Hollow*; Mixed Blood Theatre: *The Curious Incident of the Dog in the Night Time*, *Vietgone* **Accolades** 2017 Ivey Award for Production Design and Execution for *Six Degrees of Separation*, Overall Excellence for *Ragtime* **Upcoming Projects** Trademark Theater: *Understood*; Old Log Theater: *Lend Me a Tenor*; Interact Center at the Guthrie's Dowling Studio: *Hot Funky Butt Jazz*

## Production Staff & Crew

Technical Director: Will Slayden

Master Electrician: Brent Anderson

Electrician: Kyla Moloney

Lighting Programmer: Tony Storie

Sound Engineer: Matt Otto

Carpenters: William Bankhead, Brittany Pooladian, Jorge Rodriguez, Kyia Britts, Ethan Jensen, Becky Provost, Meagan (MJ) Kedrowski, Tyler Samm, Madi Smith

Scenic Charge: Nicole DelPizzo

Painter: Mary Montgomery-Jensen

Run Crew: Laura Topham, Samm Nordstrom

Wardrobe/Dresser: Ash Kaun

Sound Board Operator: Charlotte Deranek

Video Programmer: Jerry Hsiao

## Special Acknowledgements

Additional sound by Brian Pekol

Projection support from Alice V. Butts

Violin coaching from Silas Sellnow



\*Members of Actors' Equity Association, the Union of Professional Actors and Stage Managers in the United States. Actors' Equity Association (AEA) was founded in 1913 as the first of the American actor unions. Equity's mission is to advance, promote and foster the art of live theatre as an essential component of our society. Today, Equity represents more than 40,000 actors, singers, dancers and stage managers working in hundreds of theatres across the United States. Equity members are dedicated to working in the theatre as a profession, upholding the highest artistic standards. Equity negotiates wages and working conditions and provides a wide range of benefits including health and pension plans for its members. Through its agreement with Equity, this theatre has committed to the fair treatment of the actors and stage managers employed in this production. AEA is a member of the AFL-CIO and is affiliated with FIA, an international organization of performing arts unions. For information, visit [www.actorsequity.org](http://www.actorsequity.org).



AARP members and those 62+ enjoy complimentary coffee and cookies before Park Square matinees courtesy of:

**AARP** Real Possibilities in the

# Twin Cities

## SPECIAL THANKS TO THE HISTORIC HAMM BUILDING

Their investment of \$12,000,000 in donated rent and use of facilities over our 40-year tenure creates a vibrant cultural life in downtown Saint Paul.

## PARK SQUARE THEATRE LEAD FUNDING PARTNERS:



The Joseph and  
Elizabeth Anderlik  
Charitable Trust

Katherine B. Andersen  
Foundation

The F.R. Bigelow  
Foundation

Harlan Boss  
Foundation  
for the Arts



Margaret H. &  
James E. Kelley  
Foundation

John Larsen  
Family  
Foundation



The Scrooby  
Foundation



The Saint Paul  
Foundation



These activities are made possible by the voters of Minnesota through a Minnesota State Arts Board Operating Support grant, thanks to a legislative appropriation from the arts and cultural heritage fund, and a grant from the Wells Fargo Foundation Minnesota.

### ANNUAL FUND

### CORPORATIONS, FOUNDATIONS AND GOVERNMENT:

#### \$10,000-24,999

Aroha Philanthropies  
Fred C. & Katherine B. Andersen  
Foundation  
Hugh J. Andersen Foundation  
Boss Foundation  
City of St. Paul Cultural Star  
Program  
Deluxe Corporation Foundation  
National Endowment for the Arts  
RBC Wealth Management  
Foundation  
Travelers

#### \$5,000-9,999

Greystone Foundation  
Hardenbergh Foundation  
Securian  
Standard Heating &  
Air Conditioning  
Thomson Reuters

#### \$2,500-4,999

AARP  
Baird Foundation, Inc.  
Hubbard Broadcasting Foundation  
Poehler/Stremel Charitable Trust  
Twin Cities Opera Guild Inc.  
Xcel Energy  
Archie D. & Bertha H. Walker  
Foundation  
Willis Towers Watson

#### \$1,000-2,499

Nicholson Family Foundation  
RW Baird Foundation  
Lillian Wright & C. Emil Berglund  
Foundation

#### \$1-999

Chandler and Brown, Ltd.  
Commonweal Theatre Company  
Margaret A. Cargill Foundation  
Exxonmobil Foundation  
Medtronic Foundation  
National Checking Company  
The Quaker Hill Foundation  
United Health Group  
US Bank  
The Walt Disney Company  
Foundation

### INDIVIDUALS:

#### CHAMPIONS \$25,000+

The Anderlik Charitable Trust<sup>†</sup>  
Linda Boss  
Nancy Feldman  
The John W. Harris Family  
Richard & Nancy Nicholson  
Gayle & Timothy Ober

#### DIRECTORS \$10,000+

Suzanne Ammerman  
Barb & Fran Davis  
David Robinson & Janet Ekern  
Susan Rostkoski  
Paul & Pat Sackett  
Barbara Schmidt &  
James Persoon

#### FANS \$5,000+

Anonymous  
Janet Albers  
Jeffrey Bores & Michael Hawkins  
Paul & Tina Casey  
Betsy Cobb & Peter Maye  
Mary Ebert & Paul Stembler  
Dianne & Jim Falteisek  
Barbara Forster &  
Lawrence Hendrickson  
David & Genevieve Freier  
Karen Heintz  
Paul & Tara Mattessich  
Walter McCarthy & Clara Ueland  
The Estate of Dick Morrison  
Benedict & Rita Olk  
David & Karen Olson  
Peter & Sara Ribbens  
James Rustad & Kay Thomas  
Kari Ruth & Tom Park  
Susan & William Sands  
Bruce A. Lilly & Paula Schad Lilly  
John Sullivan  
John & Sandra White  
Ann Wynia

#### LEADERS \$2,500+

Judy Bartlett  
John Berthiaume & Joanne Votel  
Hildy Bowbeer  
Thomas & Mary Brown  
John (Jack) Burbidge  
Burdick Family Fund  
Charles & Laura Cochrane  
Edward Fox & Lori Belair  
Jewellie Grape  
Jim & Judy Haigh  
Andrea Trimble Hart  
Jeff & Kathy Johnson  
Paul & Renee Johnson  
Wesley & Deirdre Kramer

John & Jeanne Lefevre  
Celita & Eric Levinson  
Ken & Diana Lewis  
Jack & Jeanne Matlock  
Rosanne Nathanson  
Kristin & Davis Parker  
Scott T. & Jennifer  
Norris Peterson  
Thomas & Nancy Rohde  
Emily & Dan Shapiro  
Helen Wagner  
Fred Wall

#### PACESETTERS \$1,500+

Jim & Ellen Altman  
Anonymous  
Steve & Nancy Apfelbacher  
John & Barbara Balfanz  
Lynne Beck  
Tim & Sara Beckstrand  
Mary Beth Brody &  
Richard Crowell  
John Clarey & Robyn Hansen  
Michael & Sharon Conley  
Casey & Rachael Crabb  
Tom & Mary Lou Detwiler  
Joseph & Lois Duffy  
Mary Finnerty & Patrick Esmonde  
David & Ann Heider  
John & Karen Larsen  
Sharon & James Lewis  
Edwin & Jennifer Ryan  
Carolyn Sorensen & David Kelm  
Sarah Stevenson  
Mark Stutrud  
Sheri Zigan

#### GUARANTORS \$1,000+

Anonymous  
Corrie Beck  
Daniel Boone



Christopher & Kristin Boylan  
C.C. & Dawn Clawson  
The Crabb Family, Ken, Gwen, Casey  
& Rachael  
Fran Davis  
Joan Duddingston  
Lucas Erickson  
John Gillen in memory of  
Lawrence E. Pierson  
Douglas R. Heidenreich  
Robert & Lucille Ingram  
Heath & Elyse Jensen  
Bruce Jones & Joann Nordin  
Kaj & Meaghan Johansen  
Ray & Janet Krause  
Lynn Kvalness  
James & Mary LaFave  
Liz Lee  
Judy McNamara  
Carol Millar  
James R. Miller  
Richard & Joan Newmark  
Ford & Catherine Nicholson  
Robert & Megan O'Leary  
Molly O'Shaughnessy &  
Michael Monahan  
Douglas & Carol Ogren  
George Perez &  
Karna Johnson Peters  
Diane Pike & Stephen Willett  
Trudy Richter & Allan Kamrath  
Shona Ramchandani  
Mackenzie & Steve Romenesko  
Ken & Nina Rothchild  
Summer Seidenkranz &  
Clark Schroeder  
Art & Jan Seplak  
Irene Suddard  
Martha Turner  
Gail Ward & John Smith  
Jo & Steve Zimmermann

## BENEFACTORS \$500+

Terri Banaszewski & Jim Ostlund  
William Randall Beard  
Cory & Pam Biladeau  
Thelma Boeder  
Al Bradley  
Jean & Carl Brookins  
Paul & Kristy Brown  
Francis Busta & Jean Kinsey  
Susan Cammack  
Gissell Castellón  
Joe & Martha Christian  
Kathy Cristan  
Andrew Currie Jr. & Ames Sheldon  
Tom & Mari Eggum  
Steven Euller & Nancy Roehr  
Richard & Beverly Fink  
Robert & Judith Gardner  
Kristin Geisler  
Nancy Gove & Keith Andersen  
Jennifer Gross  
Pat Hodges  
William & Linda Holley  
Gerald Holt  
Patricia & David Izek  
Mary Jacobs  
Pamela & Doug Johnson  
Nancy Jones  
Ed Kagle  
William & Janice Kimes  
Laurel Krause & Ross Collins  
Thomas & Mary Krick  
David Long & Jill Tammen  
Tony Manzara & Connie Kirk  
Ron & Mary Mattson  
Laura McCarten

Roger Miller  
Robert Milligan & Sharon Danes  
Michael-Jon Pease &  
Christopher Taykalo  
Brad & Linda Quarderer  
Russell & Kathryn Rhode  
Joseph Robillard  
Tim & Kim Scanlan  
Noel Schenker  
Jackson Smith  
David & Ann Smith  
Erica Stern  
Thomas & Sharon Stoffel  
Edward & Victoria Szalapski  
Jon & Lea Theobald  
Joyce Thielen  
Missy Staples Thompson &  
Gar Hargens  
Jennifer Wagner & James Vogel  
Stephen & Kimberly Wolff

## SUSTAINERS \$250+

Carolyn Adams  
William Anderson  
Elizabeth Andrews  
Karen Asphaug & John Anderson  
Lynn & Kendra Atkinson  
Marcia J. Aubineau  
Robert & Mary Beck  
Susan & Jim Berdahl  
Cynthia & Fred Betz  
Laura & Jon Bloomberg  
Carol Bossman  
Jerry & Cathy Brennan  
Arnold & Judith Brier  
Richard Bruns  
Ute & Chuck Buehler  
Lois Carolan & Ronald Marquis  
Cecil & Penny Chally  
Ronald & Kathy Colby  
Steve Colton  
David Colwell  
Teri Cuddy  
Jody Dahl  
Jenni & Doug Devens  
Corinne & Michael Dornhecker  
Samuel Dudley  
David Dudycha & Dorothy Vawter  
Trudy Dunham  
Joanne Englund  
Sheila Faulkner  
Margot Fehrenbacher Lair  
Glen & Stephanie Fladeboe  
Dan & Jerri Freier  
Michael & Carol Garbisch  
Mary Beidler Gearen  
Jim & Cheryl Gelbmann  
Mike & Lorinda Jackson  
Todd & Mary Jacobson  
Mary A. Jones  
Art Kaemmer  
Susan Kimberly  
Chris & Jennifer Koester  
Jan Konke  
Ruth Ladwig  
James & Gail Lafave  
Kim Leventhal & Kevin Nosbisch  
Mary Lundberg-Johnson &  
David Johnson  
Edward & Judith Malecki  
Michael Mallory & Catherine Gray  
Stacy Mays & Deneen Voita  
Rita McConnell  
Ruth Mickelsen  
Aaron Milbank  
Ann Miller  
Karla & Peter Myers  
Joann Nelson

Muriel Nelson  
Karen Nemchik & Tariq Samad  
Theodore Neuhaus  
Pondie Nicholson Taylor &  
Mark Taylor  
John Orbison & Holly MacDonald  
Richard Osborn  
Bonnie Palmquist  
Jaime Pedraza  
Nicole & Charlie Prescott  
Barbara & William Read  
Lawrence Redmond  
Nancy & Kevin Rhein  
Paula and Walt Richey  
Catherine & Ferrol Robinson  
Chuck & Terri Roehrick  
Jack & Judy Schluebier  
William & Glennis Schluebier  
Ralph J. Schnorr  
Jake Sheehan & Haley Henry  
Miriam Simmons  
George Skinner & Anne Hanley  
Michael & Sherry Spence  
Cynthia & Mark Stange  
Stanley & Connie Suchta  
Michael Symeonides  
Ron & Margaret Tabar  
Bob & Kathy Thompson  
Andrew Tucker  
Gerald & Beth Voermans  
Claudia & Don Wiebold  
Terry & Susan Wolkerstorfer  
Ghiatiann Worcester  
Nell Ytsma & Mark Sauer

## FRIENDS \$100+

Susan Adix  
James & Kathy Andrews  
Howard Ansel  
Jamie Arenz  
Stephen & Jane Aufmuth  
Michael & Judy Ayers  
Annliv Bacon  
Bruce & Carol Barry  
Paul Batalden  
Molly & Jim Bauer  
Kathleen Baxter  
Thomas & Mary Beckman  
Tanya Bell  
Herbert & Lynne Benz  
Tamara Jo Bergan  
Pam & Mark Bintlzer  
Mary Lee Blomgren &  
William Velte  
Daniel Boecker  
Joan & George Bohlig  
Andrew & Jordan Boyd  
Tom Boyd  
Dorothy Brewer  
Henry Bromelkamp  
Char Brooker & Gene Mammenga  
Jim & Judy Brooks  
Judy Broske  
Estelle Brouwer  
Doug & Dana Bruce  
Julie Brunner  
Cathryn & Robert Burrell  
Lyn Burton  
Judith & Harvey Caldwell  
Richard Carlson &  
Lawrence Wilson  
Linda Carlstedt  
Jane Carlstrom & Dave Decker  
Carlos Castelan  
William & Vera Cento  
Roland & Janelle Chambers  
Darrell & Lois Charboneau  
Mary & J Chastek

David & Michelle Christianson  
Kristine Clarke  
Barrett Cole  
Karin Collins in memory of  
Dr. Thomas Collins  
Becky & Jim Cooke  
Jeanne Corwin  
Francis Cummins  
Jennifer Dardis  
Jonathan Desportes  
Elizabeth Docherty  
Lauren & Dillon Donovan  
Nancy Dougherty  
Mary Drache  
Madge Duffey  
Lorelei Ecklund  
Peggy Engh  
Sarah & John Erkinen  
Tim & Courtney Ewald  
Tom & Flopsy Farnham  
David E. Feinberg  
David Fetting & Nancy Baldrice  
Howard Fink & Stephanie Bell  
Kyle Fitzwater & Steve Rosnow  
Barbara Fleig  
Hilde & John Flynn  
Susan Flynn  
Caroline & H Dutton Foster  
Tom & Paula Foster  
Carol Freeman  
Sheelagh Frost Russell  
Nancy & Jack Garland  
Leland & Beverly Gehrke  
Burle & Louetta Gengenbach  
Thomas Gifford & Jean Heidenreich  
Andy Gikling & Mallory Jackels  
Robert & Becky Glesne  
Thomas & Virginia Coger  
Sara Graffunder  
Tom & Kristy Grieb  
Sue Ann Guildermand &  
Stephen Philipps  
Ken & Suanne Hallberg  
Michael & Daryle Hamlin  
Annette Hansen  
Diane & Bill Hansen  
Lori Harris  
Robert & Mary Hartnett  
Mark & Terri Henneman  
Annmary & Jim Herther  
Mary Kay Hicks  
Julie & Anders Himmelstrup  
Elfrieda & Ralph Hintze  
Beverly Hlavac  
Andy & Kelly Hoffarth  
Beth Hoffman  
Karen Hokkanen  
in memory of John Carlson  
Nicola & Craig Hyser  
Marvin Johnson  
Mark & Randi Johnson  
Sigrid Johnson  
Michael & Deb Jorgensen  
Susan & Kurt Kamper  
Patricia Kane & Joel Rudney  
Alfred & Sharon Kauth  
Pam & Jeremiah Kearney  
Jack & Marilyn Kemme  
Will Kenny  
Paul Kittel  
Tom Kleinschmit & Liana Magee  
Mavis Klemmenssen  
Mary Komornicka  
Patricia Koors  
Peter & Bonnie Kramer  
Michael Kruempel  
Robert & Barbara Kueppers  
Sara Kuether

# OUR CONTRIBUTORS

Al Kvaal  
David & Pamela Lande  
Jana Larson  
Janice & Louis Leichter  
Jeanne & Richard Lemberger  
Roger & Ellen Lillemoen  
Nancie Litin  
Walter & Florence Littman  
Jean Loudon & Gorden Hedahl  
Marianne Lyszak  
Terri & Bill Mallet  
Ruth Markowitz  
Kevin & Julie Marquardt  
Virginia McFerran  
Bonnie & Donn McLellan  
Jacob Melson  
Larry Meuwissen  
Gail Millette  
David & Karen Minge  
Joan & Rob Mitchell  
Patricia Mitchell  
Anthony Moe  
Frank & Juliana Molek  
Bev & Ward Montgomery  
Richard & Marina Morey  
Sara Mushlitz  
Nadine & Donald Myers  
Suzanne Nelson  
Merritt Nequette in memory of  
Pauline Lambert  
Michael & Kay O'Brien  
Rebecca O'Connor  
Michael & Connie O'Sullivan  
Roger Oelschlager  
Christina Clark  
Mary Ann Ogden  
Paul & Gina Ogren  
Donald & Mary Ellen Olson  
Margaret Osborne  
Kaitlin Ostlie  
Rena Oswald Anderson &  
Fred Anderson  
Jeff Otto  
Eric & JoAnn Pasternack  
Beth Paulson  
Naomi & Greg Pesky  
Doug & Barbara Peterson  
Mary Peterson  
Joseph Pingatore & Karen Sauro  
Daniel Pinkerton & Jane Johnston  
Mark Pocernich  
Denise Prosek & Milton Ferris  
Lawrence W. Pry & Tsippi Wrey  
Steph & Daniel Quinn  
Austin Rader & Ralia Roarig  
Sharon Radman  
Maria & David Reamer  
Molly Redmond & Steven Ring  
Rachael Reiling  
Grant Reno  
Farrel Rich  
Allan Riel  
Mike Ring & Flannery Clark  
Susan Roberts  
Greg & Dianne Robinson  
Kay Robinson  
Steve & Kris Rose  
Jane Rosemarin  
James Rosenbaum  
Eli Rosenberg  
Michael Ryan  
Kenneth Schaefer  
Jane Schmidt  
Amanda & Abraham Schwager  
Karen Scott  
Jon Skaalen  
Bruce & Marie Smith  
Ceil Smith

Lee & Lois Snook  
Tom Spear  
Joe Stanley  
John & Nan Steger  
Susan Steincross  
George & Janet Stevens  
Marcia & John Stout  
Stephen & Dana Strand  
Mary & Mike Subkoviak  
Grace Sulerud  
Craig Swan  
Mary S. Tarman  
Ella Thayer  
Beverly & Edwin Thiede  
David & Rita Thofern  
Alan Thometz  
Caroline & Richard Thompson  
Jill & John Thompson  
Keith Thorkelson  
Avinere & Janet Toigo  
Tammi Veale  
Janet & Thomas Walker  
Nancy Walton  
Peg & Doug Wangenstein  
Georgia Wegner  
Carol & Sandy Weisberg  
Mary & Don Weller  
Carol Westberg  
Rick & Barbara Whiting  
Steven Widen  
Cornie & Betty Ann Wiens  
John Williams  
Catherine & Stephen Wilson  
Francis Zebot  
Jeanne Zimmer & Pete Steinke  
Clare Zupetz

## SUPPORTERS \$1-99

Cathy Abend  
Frank & Barbara Abramson  
Atashi Acharya  
Chris Aerts  
Margaret Albrecht  
Kevin Alexander  
Elizabeth Anders  
Charles & Adair Anderson  
James Anderson  
Jerome & Constance Anderson  
Nicole Ankeny  
Anonymus  
Wyatt Arneson  
Linda Aronson  
KJ Bach  
Vicki Barnes  
Richard Barrett  
Libby Baxter  
Mary & Paul Beard  
Pat Deckas Becerra  
Susan Bedor & Robert Ford  
Kirby Bennett  
Marilyn Benoit  
Sarah Beuning  
Alfred & Sharon Bigot  
Pam Bjoraker  
James Bohen  
Lisa Bonko  
Nathan Boone  
William & Rita Bourne  
Warren Bowles  
Sally Bredehoft  
Patrick & Molly Brown  
Jenna Bubna  
Bonnie Buzza  
Thomas & Kitty Cahill  
Nan & Dennis Callahan  
Heather Candels  
Deborah Carlson & Jon Schasker  
Joan Carlson

Lockwood & Darlene Carlson  
Richard Carlson &  
Lawrence Wilson  
Marti Carter  
Phyllis & Dave Casper  
Louise Castner  
Terri Cavanaugh  
Kathie Cerra  
Clarence Chaplin  
Lindsay Christensen  
Glen Christianson  
Chris Church  
David & Joan Ciminski  
Megan Cina-Bernard  
Kristina Clark  
Sandra Clough  
Phyllis Conlin  
Ben Cook-Feltz & Ellen Stanley  
Mary Coyne  
Richard & Trudy Cragg  
Margaret Daly  
Joseph Danko  
Mary Dew & David Miller  
Rita Dibble  
Alison Didier  
Sue Diekman  
Carol Diemert  
Kim & Tim Dirr  
Cheryl Divine  
Jen Dolen  
Kevin Drew  
John Dufresne  
Michele Dunn  
Shawn Dunn  
Margaret Durham  
Daniel Eaton  
Kathy Ebertz  
Miss Chari Eckmann  
Barbara & John Edgar  
Ernest Edwards  
Lisa Egnash  
Marge & John Ellert  
Jean Ellingson  
Susan Elsnor  
Linda Engberg  
Jeffrey & Debra Erager  
Kennedy Erickson  
Cynthia Eynuni  
Lillian Ezenagu  
Ellen L. Ferrari & Stewart H. Corn  
Karl & Sara Fiengenschuh  
Jerry & Debbie Filla  
Pamela Flenniken  
Alan Flory  
Donna Floyd  
Carol J. Foley  
Julia Fong  
Richard Fong  
Edward Forbes  
Larry Forsland  
Christine Fournier  
Joanne & Ernie Frankovich  
Doug Freerksen  
Sally Friisoe  
Chris Fullerton  
John Furanna  
Stephen Galligan  
Sharon Garber  
Gayle Gaskill  
Hans Gasterland  
Mary & Clyde Gates  
Diane Genova  
Elena Giannetti & David Pacheco  
Marlene Gibas  
Sue Gillman  
Barbara Glidden  
Alexis Goffe  
Megan Gooden

Richard & Jane Goodspeed  
Karen Gosselin  
Kelsye Gould  
Patricia Grafstrom & Louis Lutz  
Judith Leahy Grimes  
Bonnie Grzeskowiak  
Dorothea Gumbrell  
Arjun Guneratne  
Melissa Haback  
David & Patricia Hagen  
Kevin Hagstrom  
Kayla Hall  
Peter Hall  
Allen Hamilton & Susan Wagner  
Jarilyn Hamness  
Rita Hample  
Paul Hamre  
Emilie Hanson & David Higgins  
Julie Hanson  
Stephen Harner  
Lizzie Harris  
Norman & Marlys Harris  
Elisabeth Hartmark  
Joyce Haselmann  
Jody Hauer  
Linda Hayen  
Maria Henly  
Jeff Henneman  
Patricia Heraly  
Christina Herold  
Julie Hieggelke  
Hanna Hill  
Kendra Hoffman  
Alan Hooper  
William Horsch  
Pam Hove  
Kathy Howson  
Michael Huck  
Roberta Humphreys  
Carol Hunn-Gregory  
Elizabeth Hurst  
Carol & Joseph Incremona  
Beth Iseminger  
Marjorie Jacobsen  
Paul & Norma Johannsen  
Jean Johnson  
Jean Johnson  
Kirby Johnson  
Lynn Johnson  
Matt Johnson  
Brian Joyce  
Donald & Phyllis Kahn  
Dave & Joanne Kamper  
Bradlee Karan  
Merrily Karel  
Laurence Kennedy  
Lawrence Kerzner  
Missy Kieffer  
Anna Kieselbach  
Richard Kinde  
Glenn Klapperich  
Mary Louise Klas  
Mina Kobayashi  
Gail Kochie  
Gloria Koehl in honor of  
Kristin Mitchell  
Karen Anita Koepp  
Christopher Kopka  
Harold Koppy  
Keith Kuffel  
Mallory Kurtz  
Matt Kushner  
Eve Laabs  
Janet Lafrance  
Joanne & David Laird  
Wendy Lane & Judith Fairbrother  
Joellen Lange  
Joyce Lasecke

Michael Lawless	Pamela Oslund	Ruth Schaefer	Mary Thompson
Le Hubie	Sandra Overland	Erika Scheurer	Natalie Thompson
Janet Leach	Laura Owens	Laura Schlatter	Penny Thompson-Burke
Mariellen & Wayne Leebaw	D.L. Palmquist	Mary Schneider	Sharon Thuecks
Ms. Susan Lemm	Elizabeth Parker	Michael Schoeberl	Elizabeth Tisel
Steven Levy	Ron Parker & Janet Houck	Michael & Nancy Schoenberger	Karen Titrud
Carol Lichterman	Al Paulson	Wayne Schoeneck	Rene Tragatsch
Bob & Bev Liebig	Lois Pearson	Carol Schuette	Michael & Dianne Trdan
Margaret Lindlof	Susan Persons	Paul Schulte	Martha Trumble
Linda Lingen	Kathryn Peters	Kurt Schultz	Tim & Chicki Tucker
Sharon Link & Robert Lewis	David Piehowski	David Seed in memory of	Wendy Turner
Blake Lovelady	Shelli & Michael Place	Ronald Loen	Peg Tyler
Paula Manzik	Michael & Debra Pleasants	Jan Selby	Linda Valentine
John Marmar	Dominic & Jean Plucinski	Margaret Severe	Natalie Valentino
Andrew Martin	Courtney Poja	Connie & Wally Shaver	Gerry & Arlis Vande Garde
Steve & Rita Mattaini	Nicholas Polta	Dennis Shegos	Lawrence & Mary Sue Voeller
Barbara McClellan	Jacqueline & Aaron Preusse	Len Shelhamer	Mary Voight
Brian Mcevoy	Ryan Prins	Amy Showers-Stone & Alex Stone	Phillip Voight
Anne McInerney	Corey Quick	Jeremy Siers	John Waldron
Barbara & Larry McMullen	Sarah Quinn	Chris Simon	Julia Wallace
Jean & Kevin McNamer	Anton Rang	Sharon Skogen	Susan & Wayne Walther
Betsy McNeerney	Melanie Rankin	Andrea Smith	Liz Walton
Mary Mehsikomer	Lane Rapp	Debora Smith	Sally Waterman
Margaret Michaelson	David Raymond	Diana Smith	Cortney Watson
Karen Middleton	Sonia Reardon	Jim & Joanne Smith	Tammie Weinfurter
Alan & Sharon Miller	Jim Redmond	Mary Smith	Alexandra Whitman
James Miner	Marc Reigel	Susan Smith	Matt Wilkening
Mawata Miner	Esther Reinart	Mariah Snyder	Barbara & Guyle Wills
Theresa Mish	Patrick & Debby Reisinger	Linnea Sodergren	Martha & Mike Wilson
Charlie Mishek	Christine Retkwa	Miriam Stake	William Wittenbreer & Marion Blomgren
Dean Mitchell	Richard & Martha Rhode	Carla Steen & Jeff Friedl	Stephen Wolf
LuAnn Monahan	Johanna Rian	Joe & Karen Steger	Wendy Worner
Anne Morgan	Janice Rick	Charley & Katie Stewart	Gregory Wright
Julie Moricz	Jonathan Riehle	Karen & Paul Stoddard	Maryann Wycoff
Michele Mueller	Karen Roesler	Ken & Pam Stofferahn	Virginia Yingling
Beatrice Murray	Patti Rogness	Amy Sutherland	Eduardo Zago
Diane Nelsestuen	Michael Rohrer	Victoria Sviridova	Thomas Zessman
Joy & Randy Nelson	Martha Rosenquist	Hildy Swedean	Jackie & Steve Zimmerman
John Nemecek	James Roth	Charity Tahmaseb	Jill Zitzer
Julie Ann Nevill	Jean & Joseph Rozinka	Karen Tarrant	
Ruth Nicholson	Karen & Russ Rubin	Carol Tauer	
Annette Nicolai	Barbara Ruble	Larry Teckenbrock	
Audrey & William Nowak	Karen & Steve Rudd	Amanda Termuhlen	
Christopher Obrien	Pat Sabourin	Phyllis Terwey	
William Olszewski	Jean Sauer	Coral Thacker	
			* In-Kind Gift
			† In Remembrance

## FOUNDERS SOCIETY - PLANNED ESTATE GIFTS

Betty Anderlik†	Dick Morrison†
Anonymous	Tom & Gayle Ober
Marcia Aubineau	Corrie Ooms Beck
Robert Baker	Kristin & Davis Parker
John & Barbara Balfanz	Ronald Parker
Andy† & Linda Boss	C. Michael-jon Pease
Dennis Brennan	Scott T. & Jennifer
Richard Cook & Steven Kent Lockwood	Norris Peterson
Margaret Durham	Susan Rostkoski
Mary Ebert & Paul Stembler	Ken & Nina Rothchild
Dianne & Jim Falteisek	Berneen Rudolph
Nancy Feldman	Paul & Pat Sackett
John & Hilde Flynn	Barbara Schmidt & James Persoon
John P. Gillen	Laurie Simon
Jewellie Grape	Sarah Stevenson
John W. Harris	Doris Swenson†
Sheila Henderson†	Randall & Cynthia Thoen
William & Janice Kimes	John & Sandy White
Sue McAllister	Kate Wolfe-Jenson & Ralph Jenson
Jack & Jeanne Matlock	

The Founders Society recognizes individuals who have made a future gift to the Theatre through their wills or other estate plans. These gifts literally lay the foundation for the next generation of theatre goers – making each donor a founder of Park Square's future.

You don't need to be rich to leave a lasting legacy. You can provide for your heirs, gain important tax benefits, and even receive an income now by making a thoughtful planned gift.

Planned Gifts include: A Bequest in Your Will; Retained Life Estate; Gift of Retirement Plan Assets; Charitable Remainder Trust; Gift of Life Insurance Policy; Charitable Lead Trust; Charitable Gift Annuity

**For more information about planned gifts and their potential tax advantages, please visit [parksquaretheatre.org/legacy](http://parksquaretheatre.org/legacy)**

Individual support was received between 9.1.2017 and 8.31.2018. Please help keep our records correct by contacting us at 651.767.1440 or [donate@parksquaretheatre.org](mailto:donate@parksquaretheatre.org) with any changes or oversights.

# PARK SQUARE THEATRE INFORMATION

## STAFF

### Flordelino Lagundino

*John W. Harris Family  
Artistic Director*

### C. Michael-jon Pease, CFRE

*Executive Director*

## ARTISTIC

Laura Leffler *Associate Artistic Director*

Mary Montgomery-Jensen *Interim Production Manager*

Michael P. Kittel *Resident Lighting Designer*

Charlotte Deranek *Sound Supervisor*

Madi Smith *Rep Crew Head*

Aaron Chvatal *Wardrobe Supervisor*

John White *Literary Management Volunteer*

Jared Zeigler *Production Assistant*

## EDUCATION

Mary M. Finnerty *Education Director*

Connor M. McEvoy *Education Sales & Services Manager*

Robby Miller *Education Program Associate*

Marcia Aubineau *Post-show Discussion Moderator*

### Immersion Day and Ambassador Program Teaching Artists:

Tessie Bundick, Shanan Custer, Annie Enneking, Mary K.

Flaa, Christina Ham, H. Adam Harris, Steve Hendrickson,

Brian Hesser, Katharine Horowitz, Stephen Houtz, JuCoby

Johnson, Mike Kittel, Carson Kreitzer, Kory LaQuess Pullam,

Kym Longhi, Katy McEwen, Leslye Orr, Joseph Papke,

Carolyn Pool, Aaron Preusse, Joel Sass, Doug Scholz-

Carlson, Jen Scott, Eric Sharp, Dane Stauffer, Jennifer Weir,

Regina Marie Williams, Keely Wolter

## EXTERNAL RELATIONS

Susan Berdahl *Marketing Director*

Connie Shaver *PR Director*

Mackenzie Romenesko *Development Manager*

Rachel Wandrei *Marketing & Engagement Manager*

Lindsay Christensen *Group Sales & Development Associate*

Lynne Beck *Development Consultant*

Madge Duffey *Graphic Designer*

Petronella J. Ytsma *Photographer*

Michael Hanisch *Videographer*

Jim Heideman *Telemarketing Services*

Vincent Hannam *Blogger*

## FINANCE AND OPERATIONS

Sheri J. Zigan *Managing Director*

Jackson Smith *Finance Manager*

Dave Peterson *Facility & Events Director*

Rafael Michaca Lara, Gabriel Salmon

*Facility & Events Associates*

### Front of House Staff: (Evening) Jiffy Kunik – Performance

Manager; Kasey Tunell, Mariah Christensen, Michelle Clark,

Sophie Wozniak, Tammie Weinfurter, Mina Kobayashi,

Michelle Perkowski, Claire Chwalek, Robby Miller, Steve Sell,

Gillian Constable, Eva Gemlo, Michelle Perkowski, Jenna

Gustafson, Drew Pannbecker, Lauren Everett, Suzannah

Weiss; (Daytime) Claire Chwalek – Lead House Manager;

Gayle Smith, Louise Rosemark, Ann Feider, Patricia Arnold,

Liz Englund, Marge Thoele, Gayle Sydney Linderman

**Ticket Agents:** Ben Cook-Feltz – *Ticket Office Manager*;

Eva Gemlo, Gillian Constable

**Usher & Friday Morning Club Coordinator:** Judy Bartlett

**ACCESS SERVICES STAFF:** Audio Description: Rick Jacobson, Laurie Pape-Hadley, Elana Centor, Laura Wiebers; ASL: Paul Deeming, Linda Gill, Jenae Hanson, Jonella Titus; Open Captioning: Shelia Bland, Elana Centor

**VOLUNTEERS:** Friday Morning Club: Susan Adix, Doreen Aszmus, Sue Bjerke, Pat Dalluhn, Monica Fritzen, Pat Sackett

*Thank you to all of our Volunteer Ushers.*

## BOARD OF DIRECTORS

Paul Mattessich (President)

*Executive Director, Wilder Research Foundation*

Tim Ober (Immediate Past President)

*President, Red Oaks of Dakota County Inc.*

Jewelie Grape (Vice President)

*Partner, Conner & Winters, LLP*

John LeFevre (Treasurer)

*Community Volunteer (Deluxe, Retired)*

Nancy Feldman (Secretary)

*President and CEO, UCare, Retired*

John L. Berthiaume VP, Financial Advisor,

*RBC Wealth Management*

Daniel Boone *Executive Director, Integrated Programs*

*Marketing Services, DELUXE*

Patrick Brown *Partner, Azure Wealth Management*

*Marketing Services, DELUXE*

Paul F. Casey, CIA, CFE, FLMI *Audit Manager,*

*Enterprise Operations, Internal Audit, Securian*

*Financial Group*

Gissell Castellón *Planner, Kitchen Tabletop, Target*

Barb Davis *Realtor, Coldwell Banker Burnet*

Rita M. Dibble *Vice President for University*

*Advancement, Foundation Executive Director,*

*Metropolitan State University*

Jim Falteisek *VP of Commercialization, 3M*

Kristin Taylor Geisler *Principal, Iris Consulting, LLC*

Andrea Trimble Hart *CPCU, Senior VP,*

*Willis of Minnesota, Inc.*

Karen Heintz *Senior VP, Branch Manager,*

*Robert W. Baird*

Patricia Izek *Diversity & Inclusion Recruiter,*

*University of Minnesota*

Paul Johnson *VP, Investor Relations, Xcel Energy*

Greg Landmark *VP - HR, Compensation,*

*Benefits and Operations, Travelers Insurance*

Kristin Berger Parker *Partner, Stinson, Leonard, Street*

Shona Ramchandani *Consultant, Language & Culture*

*Worldwide*

Susan Rostkoski *Consultant*

Kari Ruth *Director of Strategic Communications,*

*Hennepin Theatre Trust*

Paul Sackett *Professor of Psychology and Liberal Arts,*

*University of Minnesota*

Paul Stembler *Consultant*

# EDUCATOR ADVISORY BOARD

Marcia Aubineau *University of St. Thomas, Retired*  
Liz Erickson *Rosemount High School, Retired*  
Theodore Fabel *South High School*  
Amy Hewett-Olatunde *Humboldt High School*  
Cheryl Hornstein *Freelance Theatre and Music Educator*  
Alexandra Howes *Twin Cities Academy*  
Dr. Virginia McFerran *Perpich Center for Arts Education*  
Kristin Nelson *Brooklyn Center High School*  
Jennifer Parker *Falcon Ridge Middle School*  
Maggie Quam *Hmong College Prep Academy*  
Kate Schilling *Mound Westonka High School*  
Jack Schluebier *Central High School, Retired*  
Tanya Sponholz *Prescott High School*  
Jill Tammen *Hudson High School, Retired*  
Craig Zimanske *Forest Lake Area High School*

# THEATRE AMBASSADORS

Payton Anderson (Shell Lake High School), Billy Booth (Mounds View High School), Amiri Burns (Harding High School), Trent Chiodo (Minnehaha Academy), Soren Eversoll (Highland Park High School), Elijah Owens (Hope Academy), Emilie Davidson (Mounds Park Academy), Daniel Hubatch (Home School), Thomas Madison (Highland Park Senior High School), Izzy McCafferty (Highland Park Senior High School), Merrick McFarling (Mounds View High School), Ashley Neba (Park Center High School), Bronwyn Simmons (Spring Lake Park High School), Cassidy Thompson (Spring Lake Park High School)

# EMERGING LEADERS ADVISORY BOARD

Julia Fong *Community Volunteer*  
Abby Kohls *3M*  
Claire Milldrum *Metropolitan Consortium of Community Developers*  
Shona Ramchandani *Language & Culture Worldwide*  
Anna Selser *General Mills*

# COMMUNITY ADVISORY BOARD

Roxane Battle *TV personality, Author*  
Cissell Castellón *Planner, Kitchen Tabletop, Target*  
Julia Fong *Community Volunteer, Woodbury*  
Pedro Juan Fonseca *Actor, Twin Cities*  
Patricia Izek *Diversity & Inclusion Recruiter, University of Minnesota*  
Brian Joyce *Director of the Native FAN program, Minneapolis American Indian Center*  
Christina Ogata *White Bear Township (Education Minnesota, Retired)*  
Dawn Selle *Director of External Affairs & Development, Hallie Q Brown Community Center*  
Momoko Tanno *Performing Artist, MacPhail Center for Music*  
Carlos Vazquez *Tax Specialist, Minnesota Department of Revenue*  
Clarence White *Associate Director, East Side Freedom Library*

# CONTACT INFORMATION & TICKET OFFICE HOURS

## CONTACT

**Mailing Address:**  
408 St. Peter Street, Suite 110  
Saint Paul, MN 55102

**Street Address:**  
20 West 7th Place  
Saint Paul, MN 55102

**Ticket Office:** 651.291.7005  
**Education:** 651.291.9196  
**Donor Development:** 651.767.1440  
**Audience Services:** 651.767.8489  
**Group Sales:** 651.767.8485

## TICKET OFFICE HOURS

**Tuesday – Saturday\***  
12:00-5:00pm  
\*Open Saturdays on performance days only

**Performance Days\***  
6:30-8:30pm for 7:30 evening performances  
1:00-3:00pm for 2:00 matinee performances  
\*Hold times may be longer due to in-person customer service before performances

Proscenium Stage seats 348. Andy Boss Thrust Stage seats 203. The Historic Hamm Building is a smoke-free facility. Latecomers are seated at the discretion of the House Manager. Restrooms and water fountains are on main floor and lower level. Cameras/audio/video equipment and laser pointers are prohibited.



These activities are made possible by the voters of Minnesota through a Minnesota State Arts Board Operating Support grant, thanks to a legislative appropriation from the arts and cultural heritage fund, and a grant from the Wells Fargo Foundation Minnesota.



# BE ENERGIZED

BE SURPRISED. BE DELIGHTED.



## **SOMETIMES THERE'S WINE**

Sept 14 – Oct 14, 2018  
*Comedy*



## **THE AGITATORS**

Sept 21 – Oct 28, 2018  
*Historical Drama*



## **MARIE AND ROSETTA**

Nov 23 – Dec 30, 2018  
*Play with Music*



## **ANTIGONE**

Feb 1 – Mar 3, 2019  
*Greek Tragedy*



## **THE SKIN OF OUR TEETH**

Girl Friday Productions  
Feb 7 – Mar 3, 2019  
*American Classic Comedy*



## **MARJORIE PRIME**

PRIME Productions  
Apr 19 – May 19, 2019  
*Drama*



## **HEAVEN**

Flying Foot Forum  
May 31 – Jun 23, 2019  
*Drama / Music / Dance*



## **JEFFERSON TOWNSHIP SPARKLING JUNIOR TALENT PAGEANT**

Jun 14 – Jul 28, 2019  
*Musical*



## **AGATHA CHRISTIE RULE OF THUMB**

July 12 – Aug 25, 2019  
*Mystery*



## **Special Presentation:**

**TRIPLE ESPRESSO**  
*A Highly Caffeinated Comedy*  
Nov 9, 2018 – Jan 13, 2019

**ALL SHOWS ON SALE NOW** 651.291.7005 / [parksquaretheatre.org](http://parksquaretheatre.org)  
Buy a SquarePass! Flexibility and savings!